

**DOCUMENT 00 90 00**  
**ADDENDUM**

**ADDENDUM NO. [1]                      Date: February 26, 2020**

**RE:                      MINERAL POINT UNIFIED SCHOOL DISTRICT  
ELEMENTARY SCHOOL  
611 COTHERN ST  
MINERAL POINT, WI  
HSR PROJECT NO. 19001**

**FROM:**                HSR Associates, Inc  
100 Milwaukee Street  
La Crosse, WI 54603  
(608) 784-1830

**To:**                  Prospective Bidders

This addendum forms a part of the Contract Documents and modifies the original Bidding Documents dated February 2020. Acknowledge receipt of this Addendum in the space provided on the bid form. Failure to do so may subject the Bidder to disqualification.

This Addendum consists of [3] pages and [10] 30 x 42 drawings.

**CHANGES TO BIDDING REQUIREMENTS AND CONDITIONS OF THE CONTRACT:**

1. Pre-bid attendance attached hereto.

**CHANGES TO SPECIFICATIONS:**

2. Section 08 71 00 DOOR HARDWARE

- a. 2.01: Add "Best" cylinders as an approved supplier along with "Marshall Best".

3. Section 12 66 13 TELESCOPING BLEACHERS

- a. 2.02; Add the following:

Portable units shall be maximum 19' wide and include end rails. Those sections would be comprised of (1) 48" center aisle with (5) 18" seat modules on each side of the aisle.

Portable units shall be equipped as follows:

Integral Airlift System: Provide each portable seating section with a minimum of 2 self-contained integral airlift units. Each lift unit to be constructed from heavy gauge steel designed to support the overall weight, as well as the forces applied in relocating the seating unit. Each seating section shall be equipped with a minimum of 4 swiveling Tri-Caster assemblies (12 individual caster wheels). The total number and type of caster to be determined by the manufacturer based on the overall weight and flooring surface. To reduce the effort needed to relocate the seating unit and allow greater mobility, each caster assemble shall be attached to a caster plate that swivels independently of the tri-casters by means of high quality ball bearings. Each seating section shall be equipped with quick disconnect air valves at both ends of section for ease of operation. Supply one 1-1/2 HP 125 PSI portable air compressor with tank. Architect/owner to coordinate the compatibility of the portable seating and floor surface with the flooring manufacturer.

4. Section 23 09 23 DIRECT DIGITAL CONTROL SYSTEM FOR HVAC
  - a. 1.04: INSTALLER: Remove the wording "Only two installing companies are accepted by the Owner; see Section 23 09 14."

#### **CHANGES TO DRAWINGS**

5. Sheet S110 FLOOR FRAMING PLAN 30 x 42 attached hereto
  - a. Revisions clouded on Drawing.
6. Sheet S800 FOUNDATION DETAILS 30 x 42 attached hereto
  - a. Revisions clouded on Drawing.
7. Sheet S810 FRAMING DETAILS 30 x 42 attached hereto
  - a. Revisions clouded on Drawing.
8. Sheet P101 LOWER LEVEL UNDERGROUND REMODEL PLAN SEGMENT A 30 x 42 attached hereto
  - a. Revisions clouded on Drawing.
  - b. Revise flex pipe routing for drops in wall.
9. Sheet P103 LOWER LEVEL ABOVE GROUND REMODEL PLAN SEGMENT A 30 x 42 attached hereto.
  - a. Revisions clouded on Drawing.
  - b. Reroute drops in West wall of 143 sped/sensory to 143A office flex
  - c. Resize hard cold water mains and branches to wall hydrants and hose bibs
  - d. Replace HB1 in toilet rooms with HB2.
10. Sheet P104 LOWER LEVEL ABOVE GROUND REMODEL PLAN SEGMENT B 30 x 42 attached hereto.
  - a. Revisions clouded on Drawing.
  - b. Resize cold water main.
  - c. Resize hard cold water main and branches to wall hydrants .
  - d. Add note "refeed existing toilet rooms from new main".
11. Sheet P105 UPPER LEVEL REMODEL PLAN SEGMENT A 30 x 42 attached hereto
  - a. Revisions clouded on Drawing.
  - b. Replace HB1 in toilet rooms with HB2.
12. Sheet P200 PLUMBING DETAIL PLANS 30 x 42 attached hereto
  - a. Revisions clouded on Drawing.
  - b. 1/P200 Change note to "valve and sight flow indicator at branch"
  - c. 1/P200 Change note to "refeed existing HW with 1-1/4" piping"
  - d. 1/P200 Replace HB1 in toilet rooms with HB2
  - e. 1/P200 Resize HW and CW mains
  - f. 7/P200 Remove tags on supply piping from main in chase. Piping to be sized on supply connection to fixture.
13. Sheet P303 PLUMBING DETAIL ISOMETRICS 30 x 42 attached hereto
  - a. Revisions clouded on Drawing.
  - b. Remove tags on supply piping from main in chase.
  - c. Add note "Piping to fixtures from main in chase to be sized as supply connection to fixture.

14. Sheet E500 ELECTRIC RISER DIAGRAM 30 x 42 attached hereto

- a. Revisions clouded on Drawing.
- b. Feeder Schedule: Mark 'D' – Provide 4#600 kcmil in lieu of 4#500 kcmil due to tap rule.

**PRIOR APPROVALS**

- 1. Section 07 21 19 FOAMED-IN-PLACE INSULATION
  - a. SWD Urethane Quik Shield Open Cell QS-108YM

**END OF DOCUMENT 00 90 00**

Page Intentionally Left Blank

**PLEASE PRINT ALL INFORMATION CLEARLY**

[illegible]

Page Intentionally Left Blank



**HSR ASSOCIATES INC.**  
100 MILWAUKEE STREET  
LA CROSSE, WISCONSIN  
PHONE: 608.784.1830  
FAX: 608.782.5844  
www.hsrassociates.com

Consultant:

**raSmith**  
CREATIVITY BEYOND ENGINEERING  
project number: 1190012

Consultants are responsible for the means, methods, techniques, sequences and procedures of construction including, but not limited to, temporary supports, shoring, bracing, forming to support imposed loads and other similar items.

MINERAL POINT UNIFIED SCHOOL DISTRICT  
ELEMENTARY SCHOOL  
611 COTHURN STREET  
MINERAL POINT, WISCONSIN  
FLOOR FRAMING PLAN

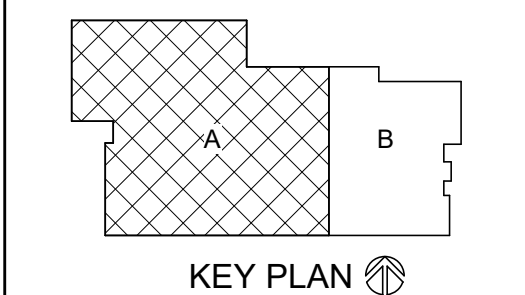
Project Title:  
Project Location:  
Project Number:  
Project Date:  
Drawn By:  
Key Plan:

HSR Project Number:  
**HSR # 19001**

Project Date:  
**2.13.2020**

Drawn By:  
**raSMITH**

Key Plan:



**BID  
DOCUMENTS**

Revisions:		
No.	Description	Date
ADD #1	Addendum #1	2/26/2020

Graphic Scale:  
**VARIES**

Last Update:  
**2/21/2020 2:03:58 PM**

**S110**

FLOOR FRAMING KEY NOTES

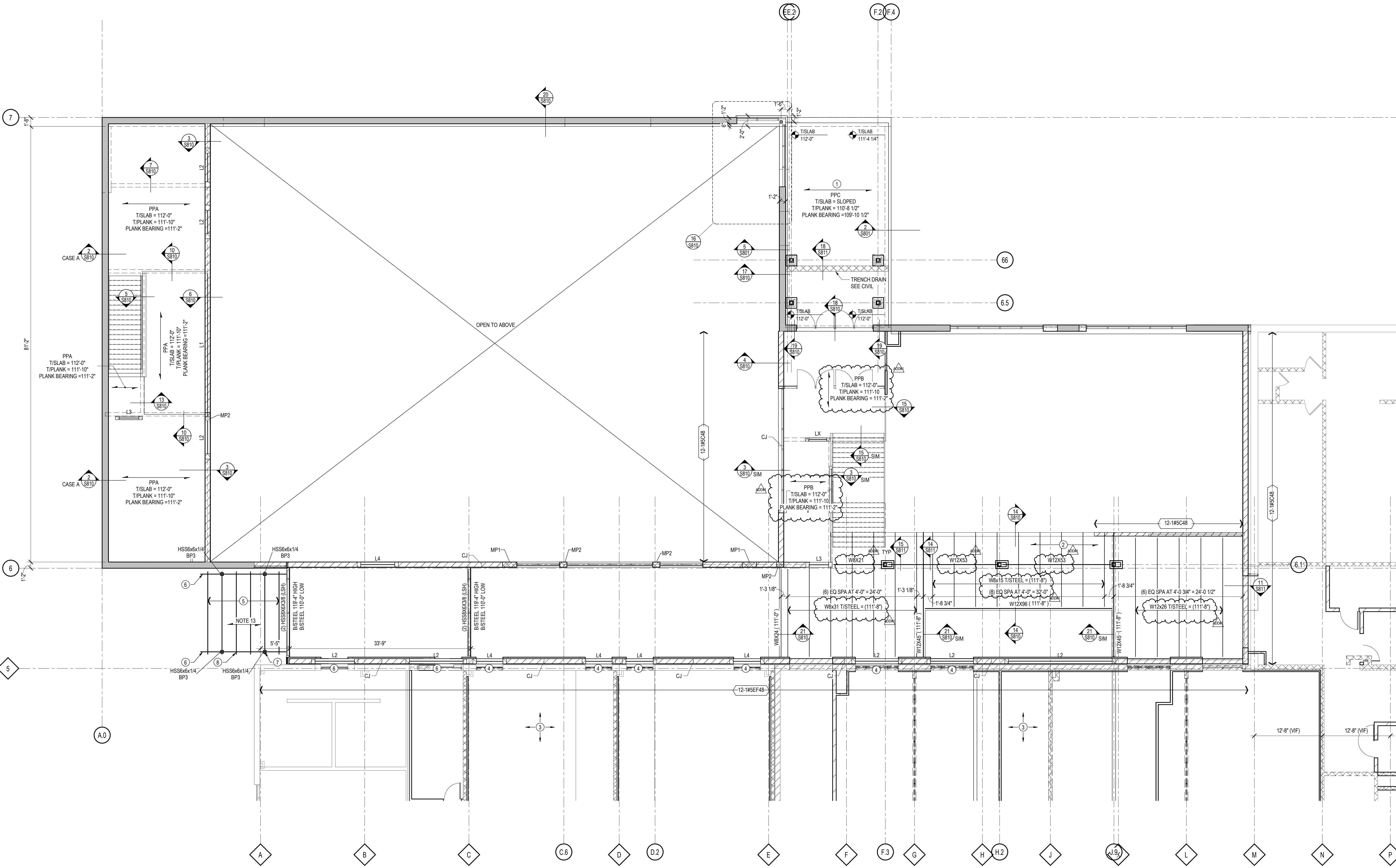
1. PLANK + TOPPING + 4" MIN INSULATION + 4" MIN SLAB WITH 6x6 - W2.1W21 WWF. CONTRACTOR TO STEP/TAPER INSULATION AS NECESSARY.
2. 4" TOTAL CONCRETE DEPTH ON 1 1/2" - 20 GA PAINTED PRIMED FORM DECK WITH SYNTHETIC FIBERS.
3. NON-BRG CMU WALLS - REFER TO ARCH FOR LOCATIONS. REFER TO S811 FOR TOP OF WALL DETAILS, MISC LINTEL SCHEDULE (S802) FOR OPENINGS.
4. EXISTING OPENING
5. GLULAM TRUSS W/ 3 1/2"x9" TOP CHORDS. COORDINATE SHAPE AND COLLAR TIE W/ ARCH. TRUSS DESIGN BY SUPPLIER
6. REFER TO MISCELLANEOUS LINTEL SCHEDULE

STRUCTURAL STEEL LEGEND

- INDICATES BEAM FRAMING OVER OR THRU HSS OR WF COLUMN
- INDICATES BEAM FRAMING INTO SIDE OF HSS OR WF COLUMN
- COLUMN MARK / COLUMN SIZE
- INDICATES BEAM-TO-COLUMN MOMENT FRAME CONNECTION
- TOP OF STEEL ELEVATION
- SHOP CAMBER
- FIELD APPLIED SHEAR STUDS BETWEEN BEAM ENDS AND/OR CONCENTRATED LOADS
- BEAM DESIGNATION
- JOIST GIRDER DESIGNATION
- INDICATED LOCATION OF BEAM SPLICE
- INDICATES EXISTING BEAM / JOIST FRAMING INTO SIDE OF NEW GIRDER
- INDICATES BEAM / JOIST FRAMING INTO SIDE OF GIRDER
- INDICATES BEAM / JOIST FRAMING OVER GIRDER
- INDICATES MOMENT CONNECTION BETWEEN BEAMS ACROSS GIRDER IN SAME HORIZONTAL PLANE
- MEMBER SIZES OR MARKS WITH A PREFIX OF "W" ARE EXISTING ELEMENTS

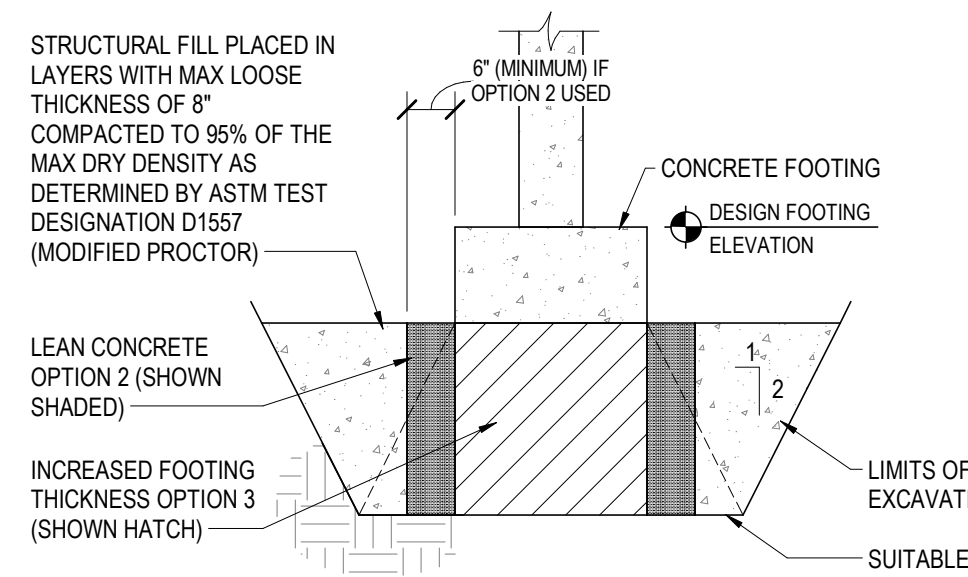
FLOOR FRAMING PLAN NOTES

1. TOPPING SLAB/FINISH SLAB ELEVATION = AS NOTED ON PLAN.
2. TOP OF STEEL ELEVATION = AS NOTED ON PLAN AS (XXX-XXX) OR (TS = XXX-XXX)
3. TOPPING SLAB IS TO BE UNBONDED. THE SLAB THICKNESS SHALL BE MEASURED AT THE ENDS OF THE PLANK SPAN. THE ACTUAL TOPPING SLAB THICKNESS WILL VARY DUE TO PLANK CAMBER AND DEFLECTION. TOPPING SLAB WEIGHT IS IN ADDITION TO THE SUPERIMPOSED LOADS REQUIRED BY DESIGN. NO REDUCTION OF TOPPING SLAB LOAD DUE TO PLANK CAMBER IS PERMITTED.
4. TOPPING SLAB TO BE REINFORCED WITH SYNTHETIC MACRO FIBERS.
5. SUPPORTING STRUCTURAL FRAMING PROVISIONS ARE BASED ON THE FOLLOWING ASSUMED MAXIMUM PRECAST PLANK SELFWEIGHTS:  
8" PLANK: 70 PSF  
10" PLANK: 80 PSF  
12" PLANK: 90 PSF
6. PRECAST SUPPLIER IS RESPONSIBLE FOR DESIGN, FABRICATION, AND INSTALLATION OF ALL HEADERS WHERE REQUIRED FOR OPENINGS THROUGH PLANK UNLESS NOTED OTHERWISE. COORDINATE SIZE AND LOCATION OF ALL OPENINGS THROUGH PLANK WITH ARCHITECTURAL, MECHANICAL, AND PLUMBING DRAWINGS.
7. PROVIDE 8" HIGH BOND BEAMS WITH (2) #4 CONTINUOUS AT AND ADJACENT TO PRECAST PLANK BEARING ELEVATIONS UNLESS NOTED OTHERWISE. WHERE PLANK BEARING IS NOT AT COURSEING, PROVIDE PARTIAL HEIGHT BLOCK GROUTED SOLID TO TOP OF BOND BEAM. WIDTH OF BOND BEAM TO MATCH WALL THICKNESS AND IS TO RUN CONTINUOUS THROUGH CONTROL JOINTS. PROVIDE CORNER BARS WHERE THEY OCCUR AND LAP ALL BOND BEAM STEPS A MINIMUM OF 24". PRECAST SUPPLIER TO PROVIDE: HARDBOARD BEARING STRIPS AT ENDS OF PLANK AT MASONRY BEARING.
8. AT EVERY OTHER PLANK BEARING ON STEEL BEAM FROM EITHER ONE OR BOTH SIDES OF BEAM, PROVIDE WELD PLATE CONNECTION NEAR END OF PLANK. SEE DETAIL 15S811.
9. BRACE TOP OF NON-LOAD BEARING CMU WALLS ACCORDING TO DETAILS.
10. REFER TO SHEET S802 FOR BOTH PLAN REFERENCED AND TYPICAL NON-LOAD BEARING MASONRY LOOSE STEEL LINTEL SCHEDULES.
11. REFER TO SHEET S803 FOR PRECAST PLANK SCHEDULE.
12. "PLANK" = TOP OF PLANK + TOPPING SLAB (WHERE REQ'D)
13. ROOF ASSEMBLY IS 3" TG DECKING W/ 15/32" (PLYWOOD OR OSB) ATTACH SHEATHING TO TG W/ 100 NAILS @ 12" OC AT PANEL EDGES AND 12" OC AT PANEL FIELDS. MIN DIST. FOR WALLS IS 3/8" FROM PANEL EDGE. STAGGER ROOF SHEATHING JOINTS.



**1 SECOND LEVEL FRAMING PLAN**  
SCALE: 1/8" = 1'-0"

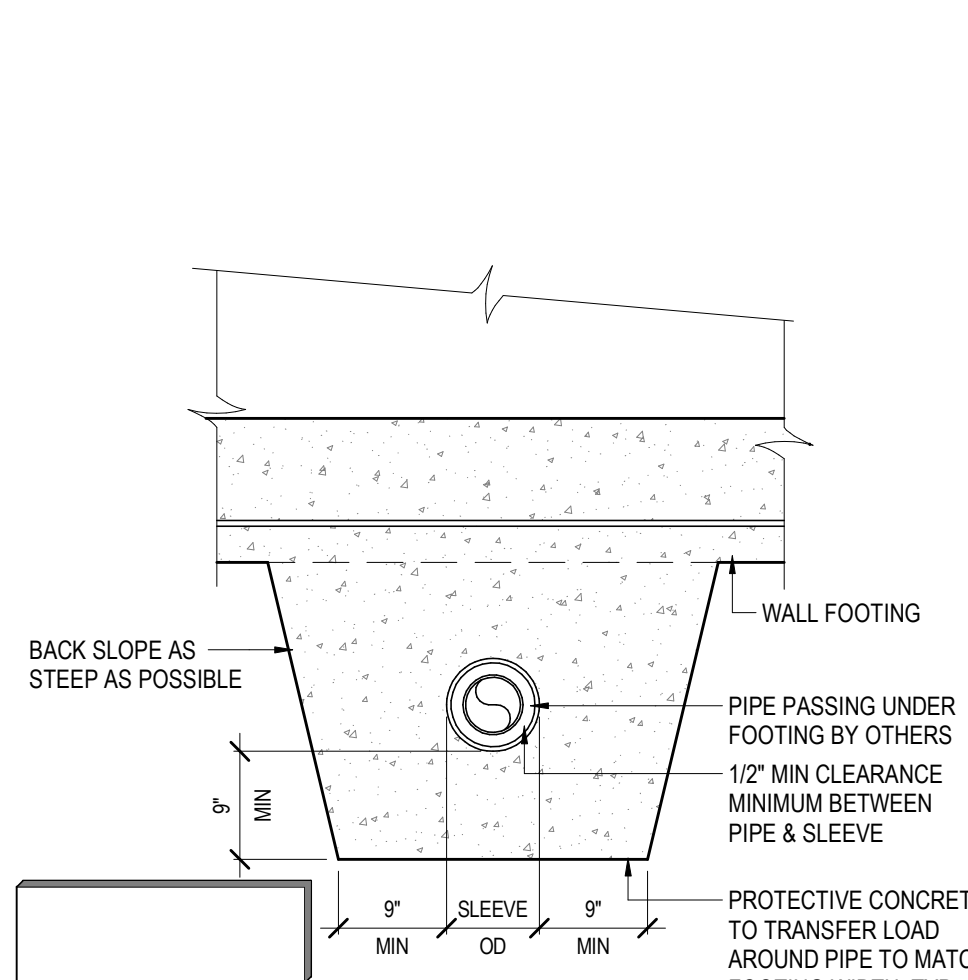




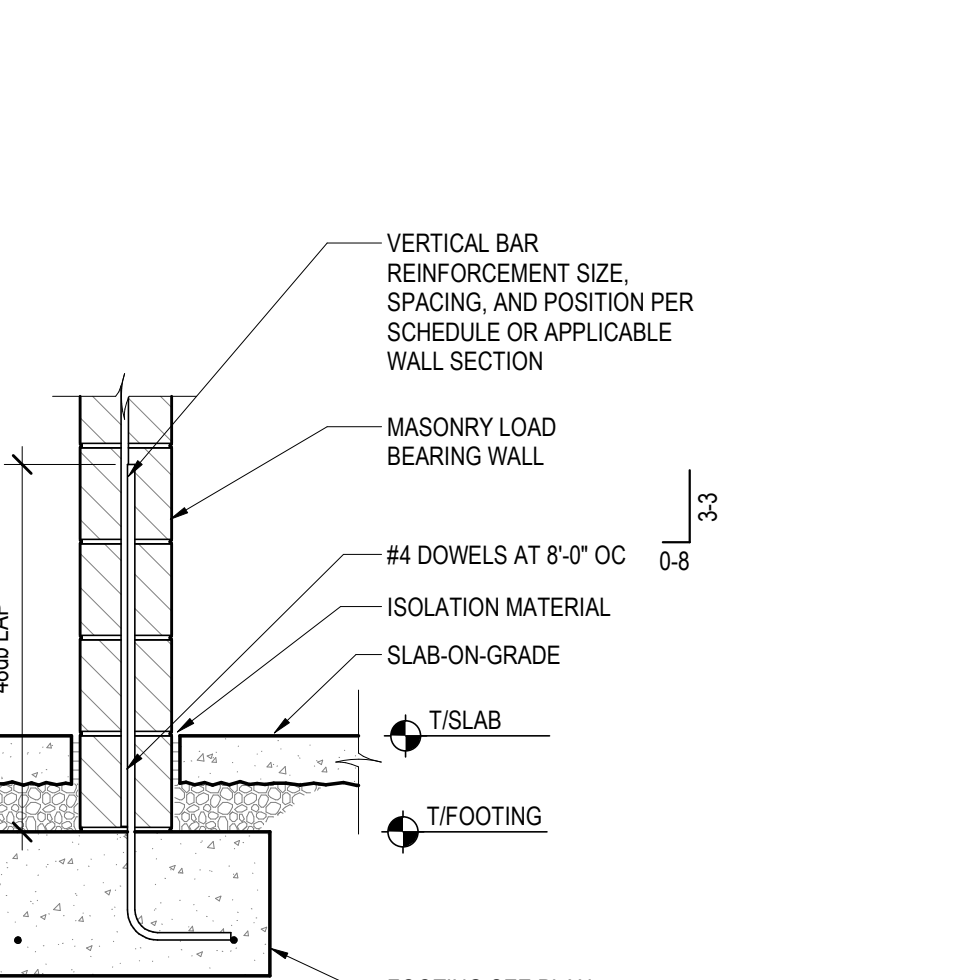
NOTES: CONTRACTOR MAY ELIMINATE STRUCTURAL FILL BY:  
1. LOWERING DESIGNED FOOTING ELEVATION SO THAT FOOTING RESTS DIRECTLY ON SUITABLE BEARING SUBGRADE.  
2. BY PROVIDING LEAN CONCRETE (FC=50 PSI) UNDER THE FOOTING TO SUITABLE BEARING SUBGRADE AS SHOWN SHADDED ABOVE. (NOT APPLICABLE IN GRANULAR SOILS)  
3. BY INCREASING FOOTING THICKNESS TO REACH SUITABLE BEARING SUBGRADE AS SHOWN HATCHED ABOVE.

THIS DETAIL APPLIES ONLY AT THOSE LOCATIONS WHERE GEOTECHNICAL ENGINEER DEEM SOILS AT DESIGN FOOTING ELEVATION INADEQUATE OF FOOTING SUPPORT.

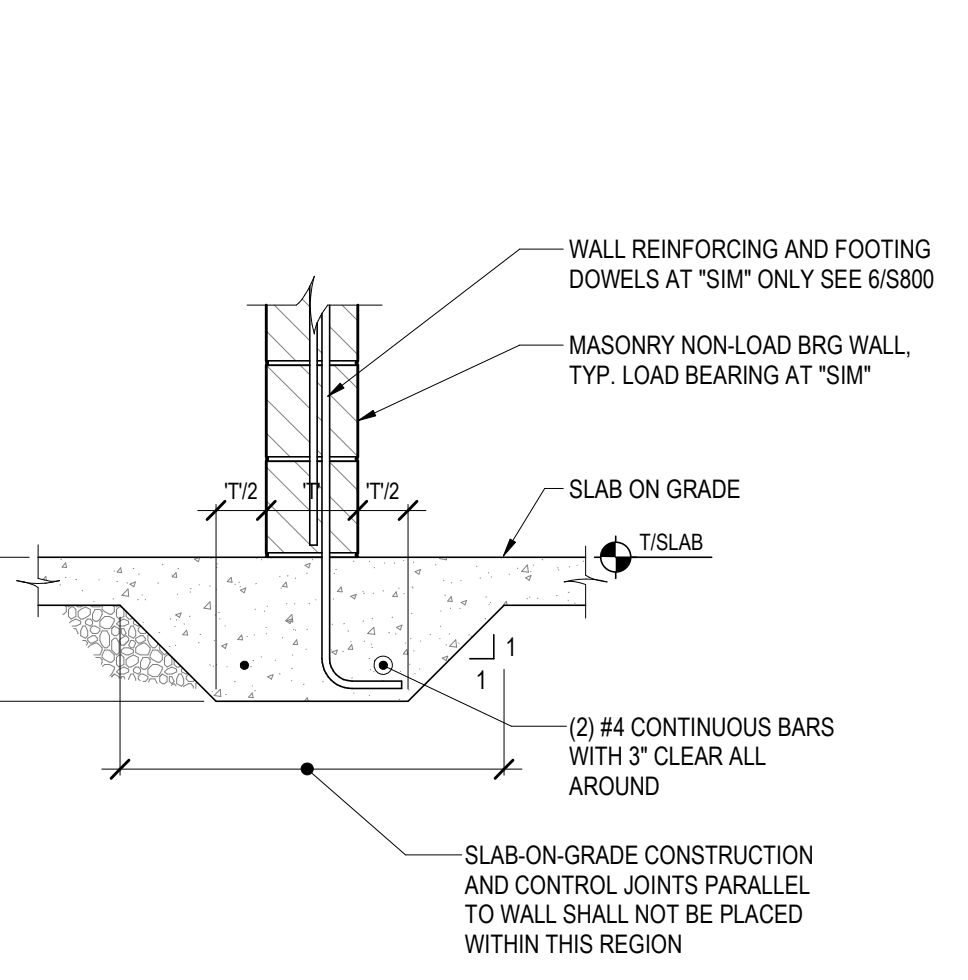
**1 OVER EXCAVATION DETAIL**  
SCALE: 1/2" = 1'-0"



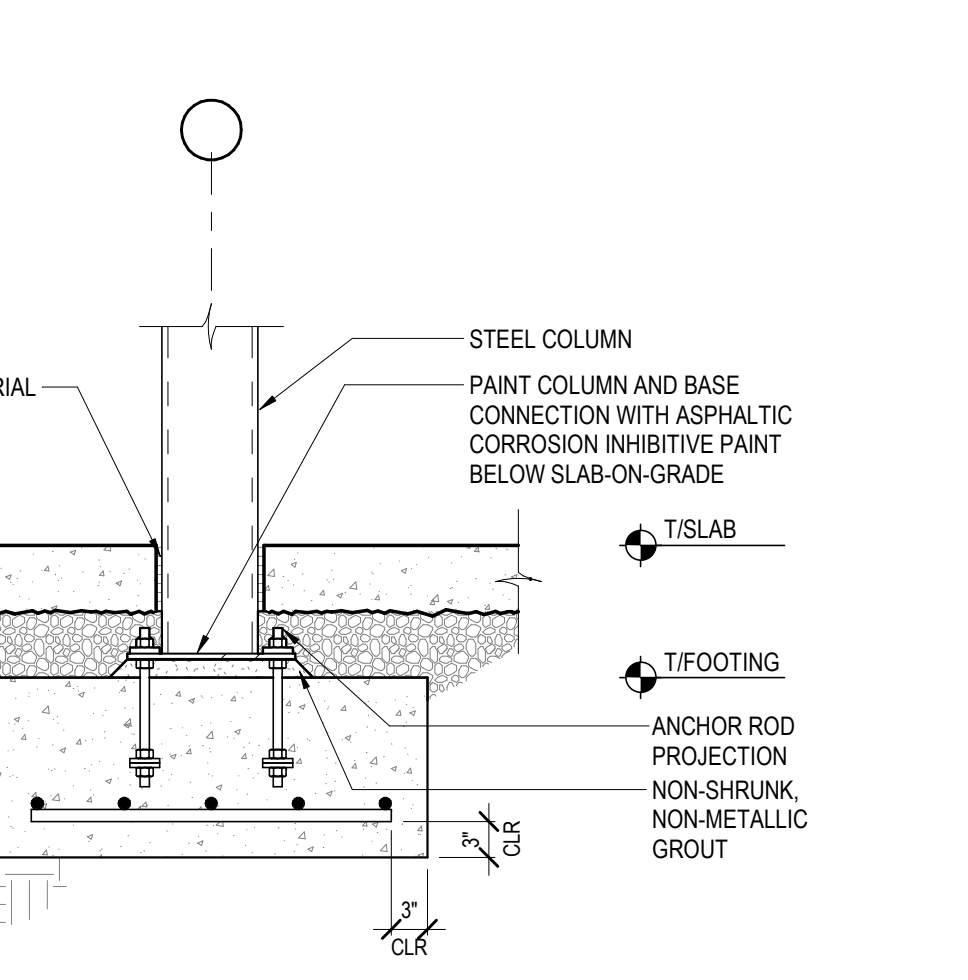
**2 PIPE PASSING UNDER WALL FOOTING**  
SCALE: 3/4" = 1'-0"



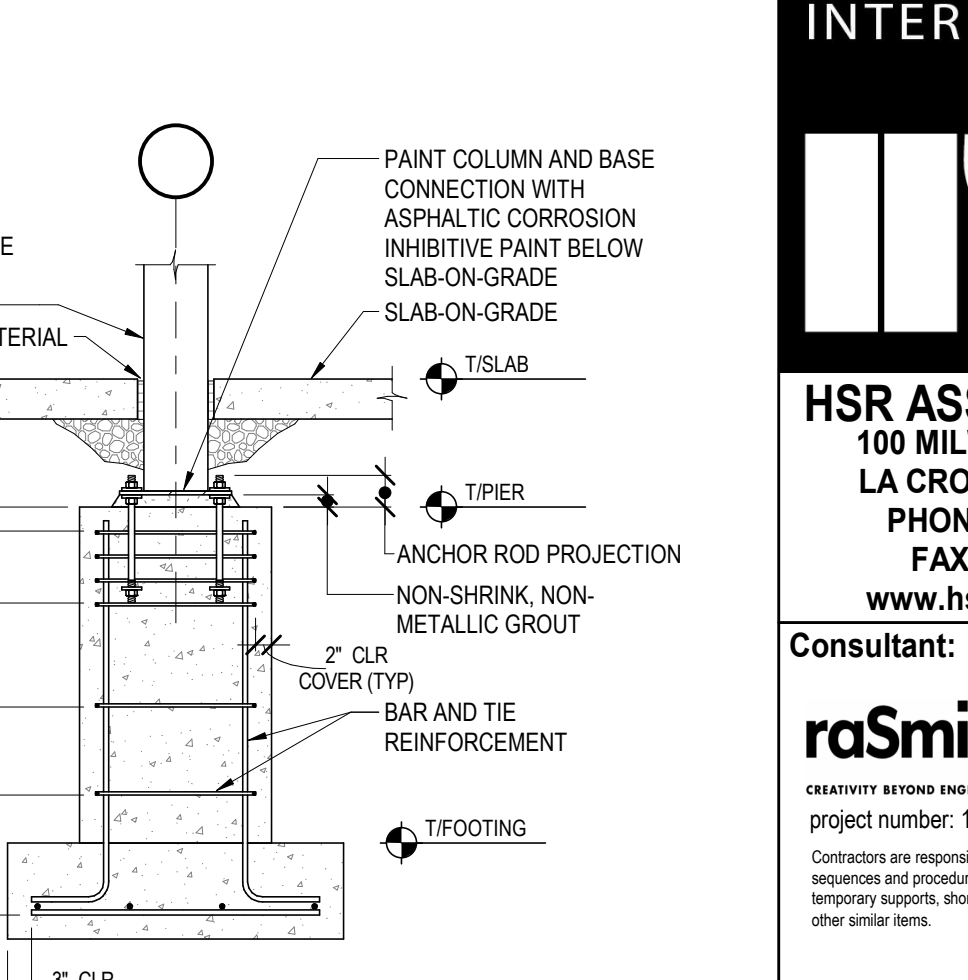
**3 FOOTING AT LOAD BEARING MASONRY WALLS**  
SCALE: 3/4" = 1'-0"



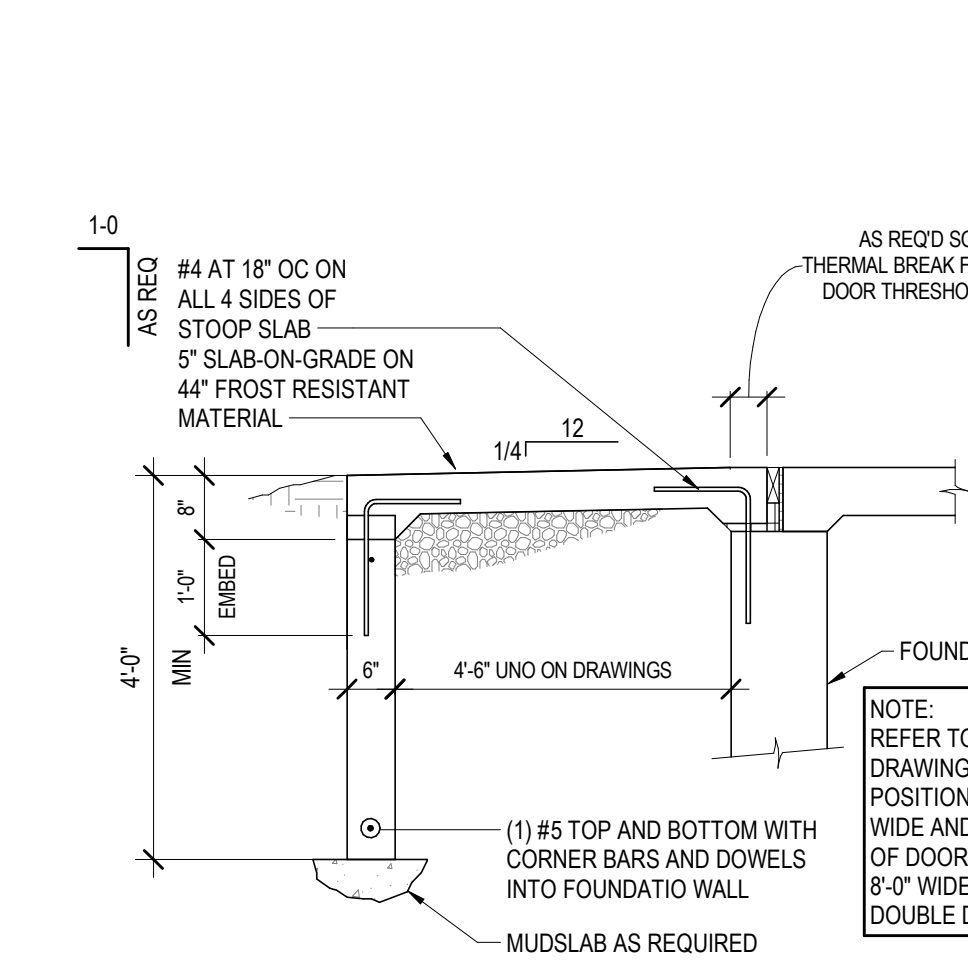
**4 TYPICAL THICKENED SLAB FOR NON-LOAD BEARING WALLS**  
SCALE: 3/4" = 1'-0"



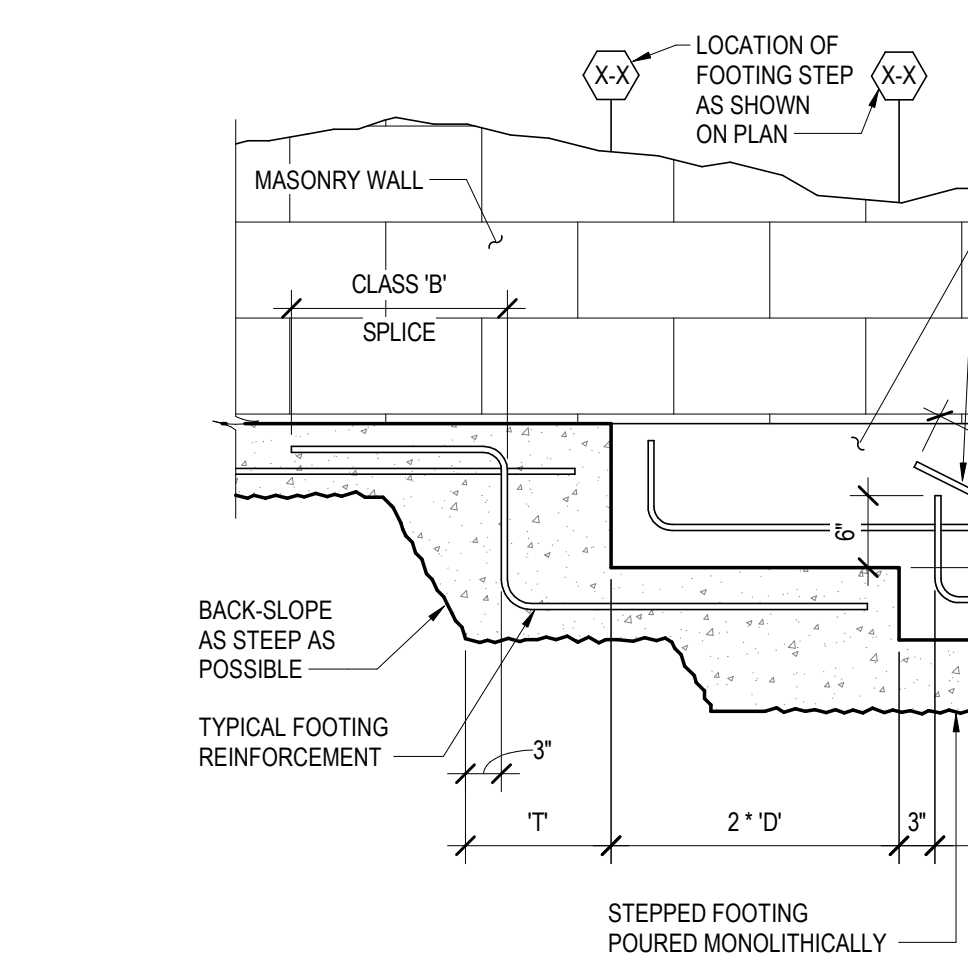
**5 TYPICAL INTERIOR COLUMN FOOTING**  
SCALE: 3/4" = 1'-0"



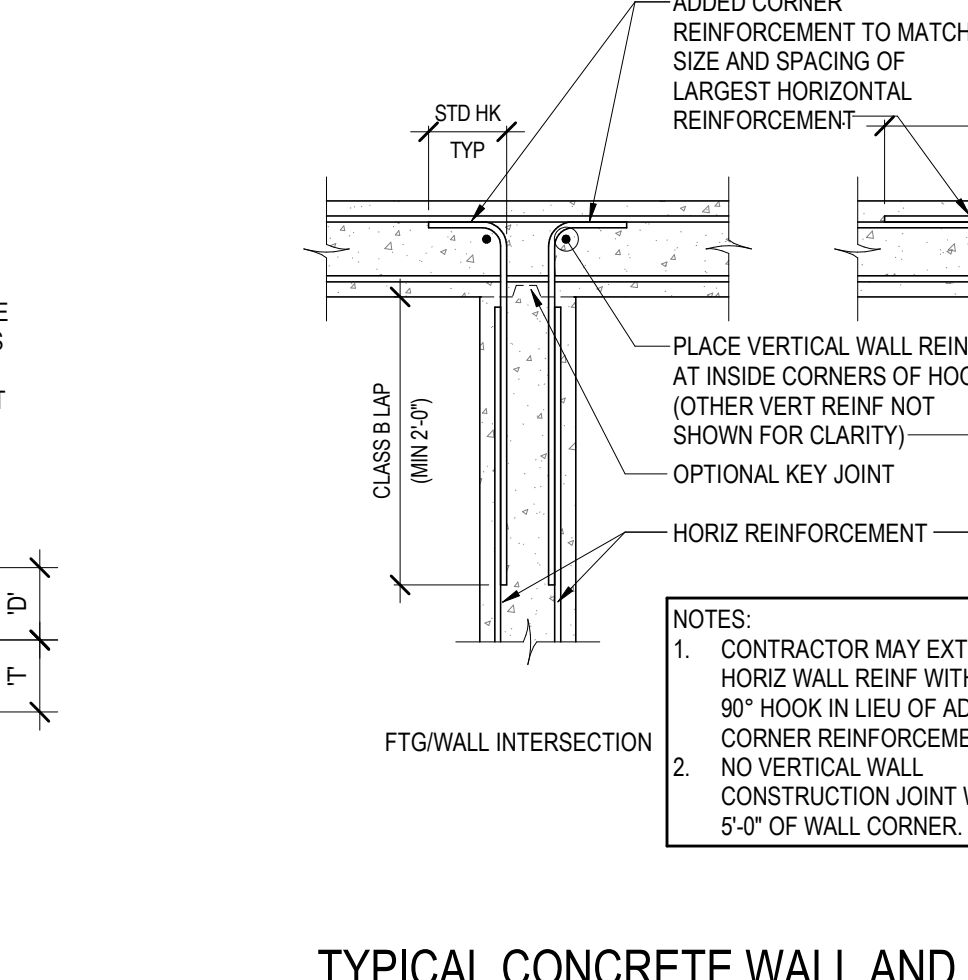
**6 TYPICAL CONCRETE PIER**  
SCALE: 1/2" = 1'-0"



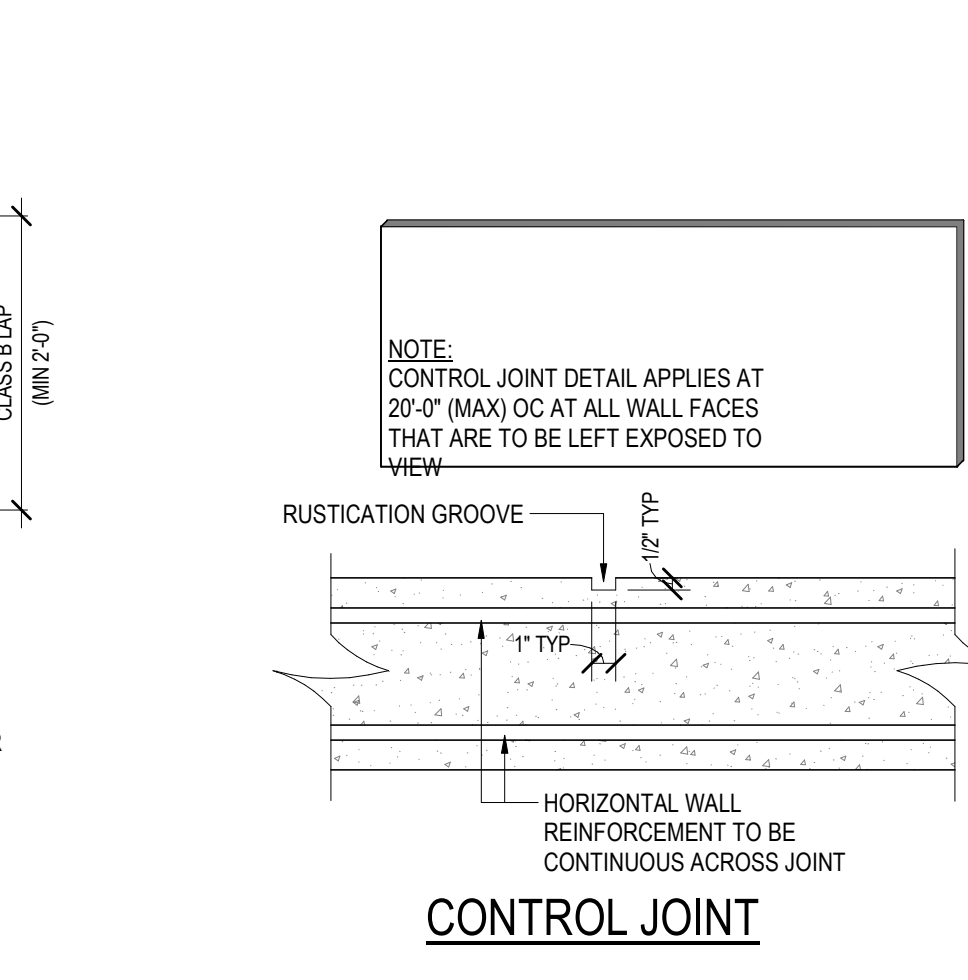
**7 TYPICAL STOOP DETAIL**  
SCALE: 1/2" = 1'-0"



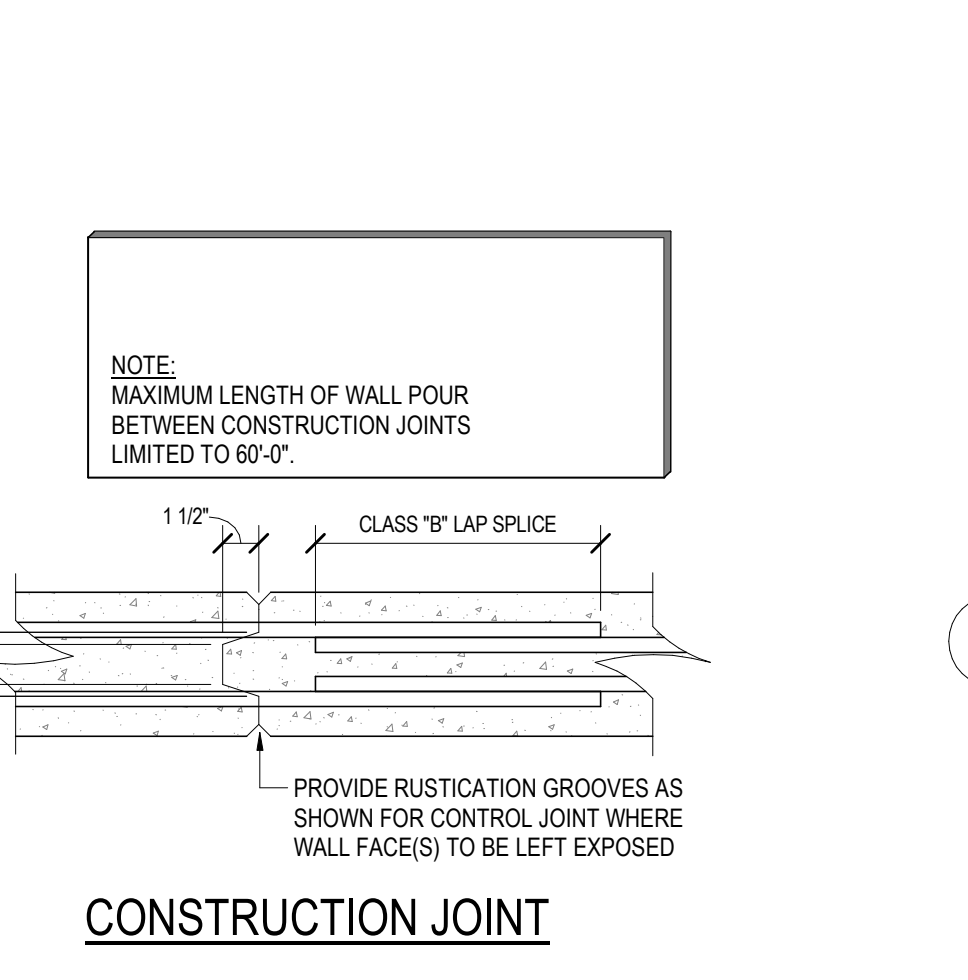
**8 FOOTING STEP DETAIL-CAST-IN-PLACE TO CMU WALL**  
SCALE: 3/4" = 1'-0"



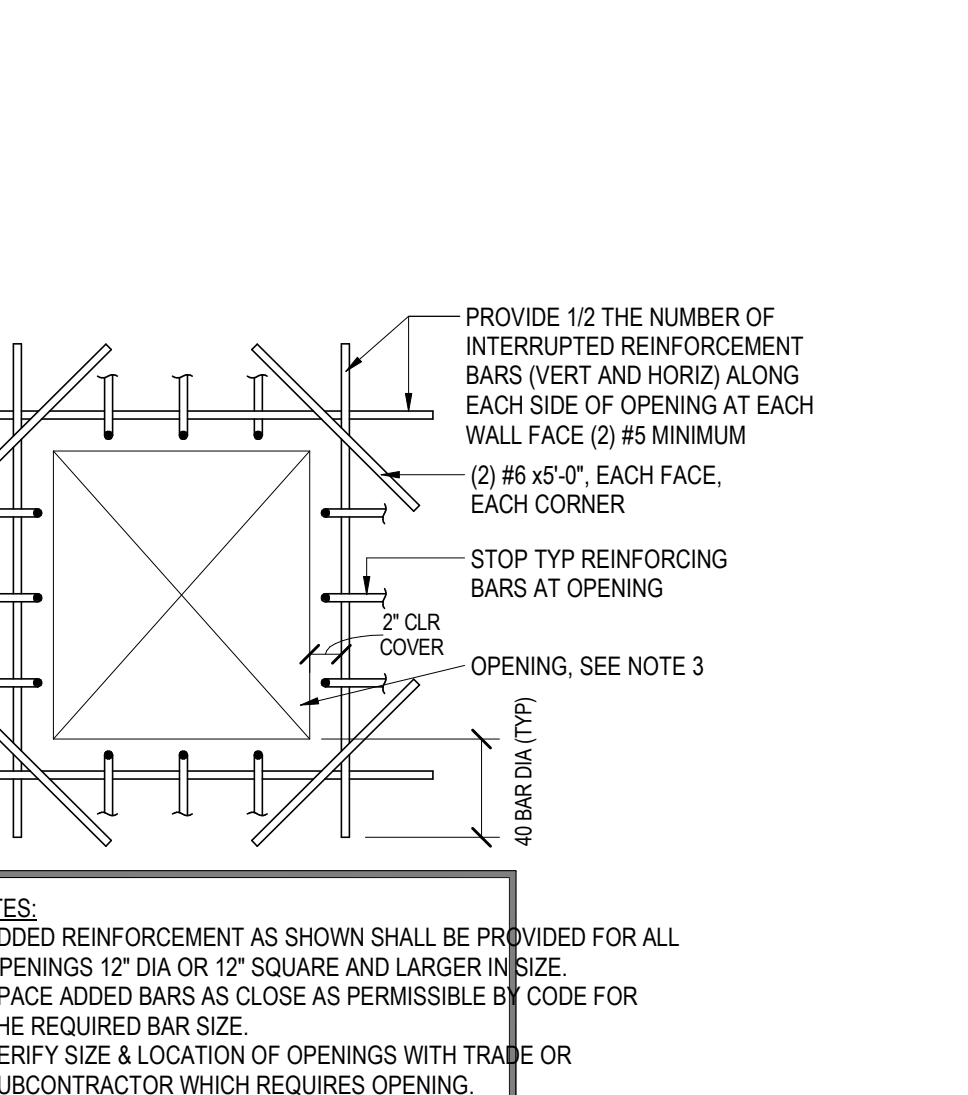
**9 TYPICAL CONCRETE WALL AND FOOTING CORNER REINFORCEMENT**  
SCALE: 3/4" = 1'-0"



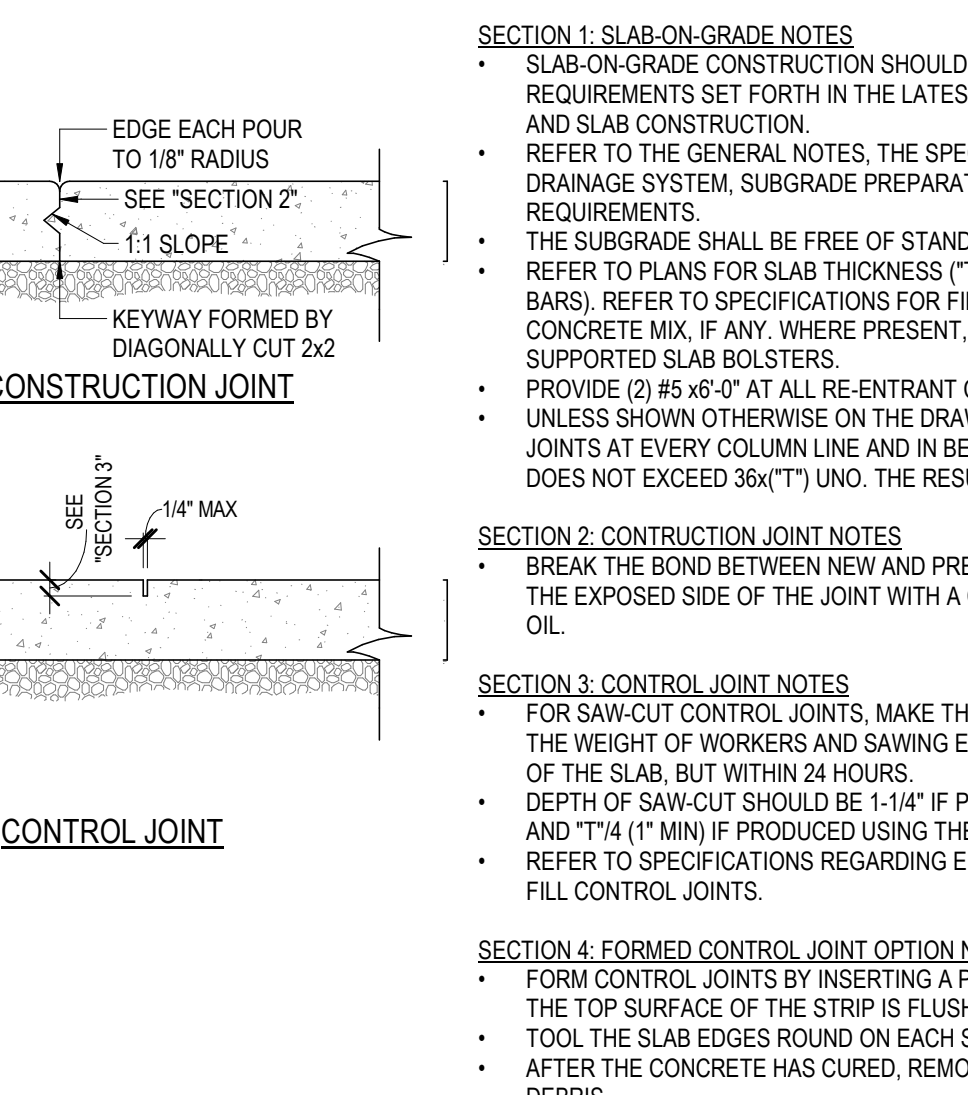
**10 TYPICAL CONCRETE WALL JOINTS**  
SCALE: 1 1/2" = 1'-0"



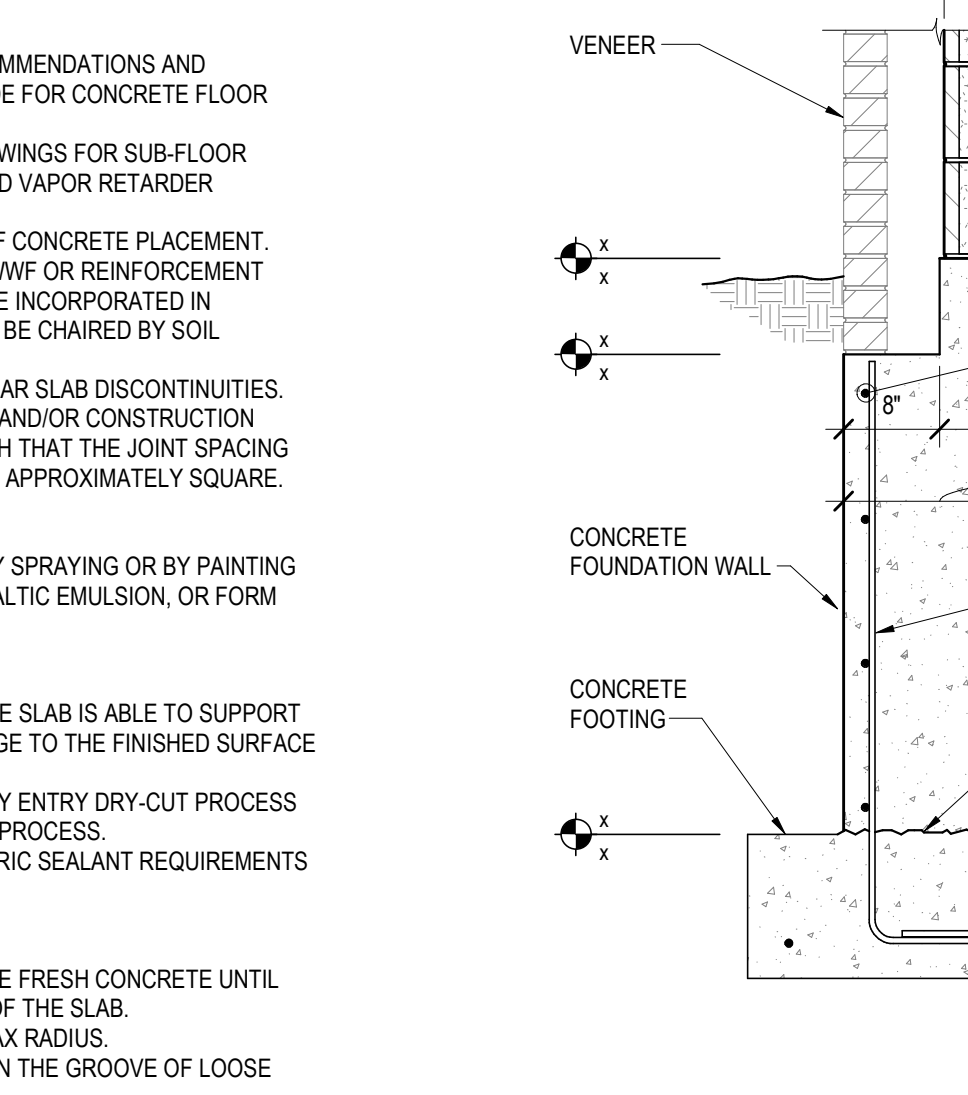
**11 ISOLATION JOINT AT COLUMNS**  
SCALE: 3/4" = 1'-0"



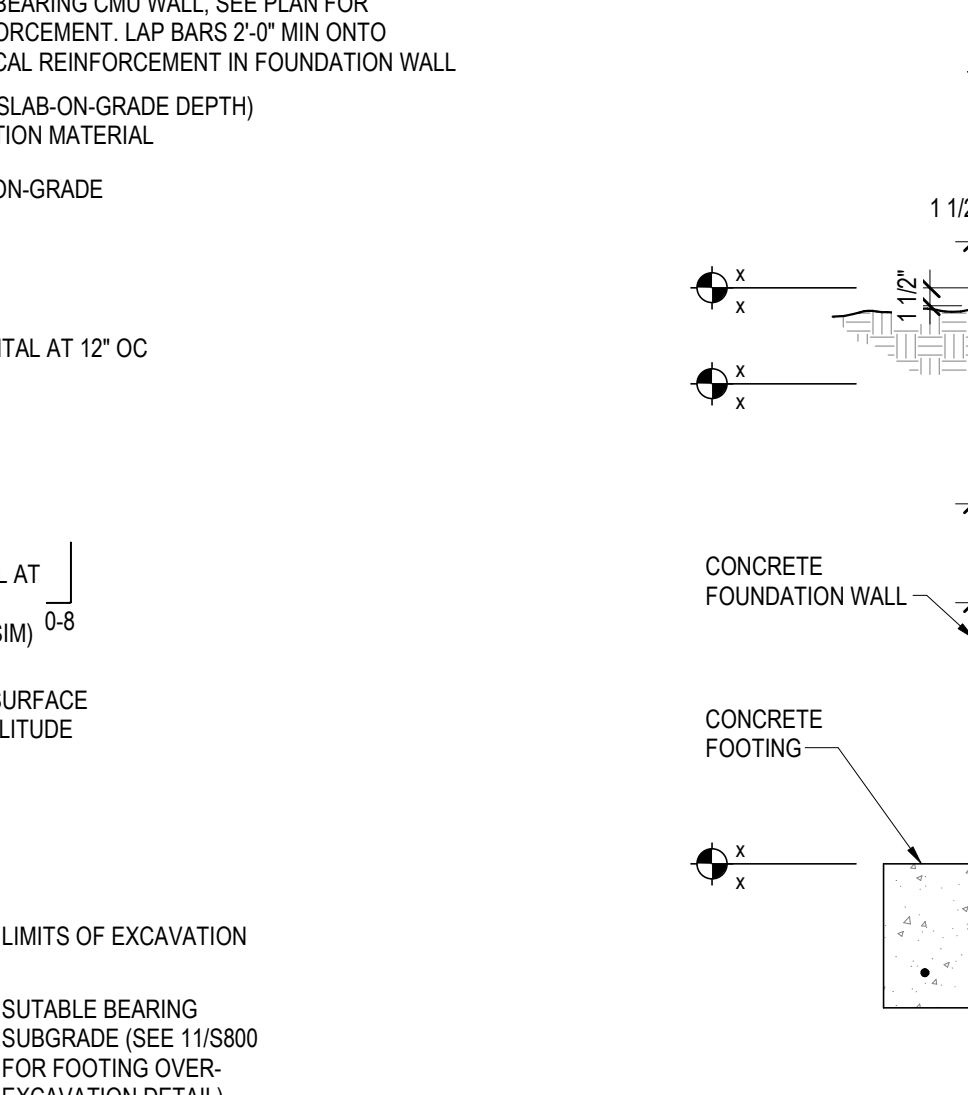
**12 ADDED REINF AT WALL OPENING**  
SCALE: 1" = 1'-0"



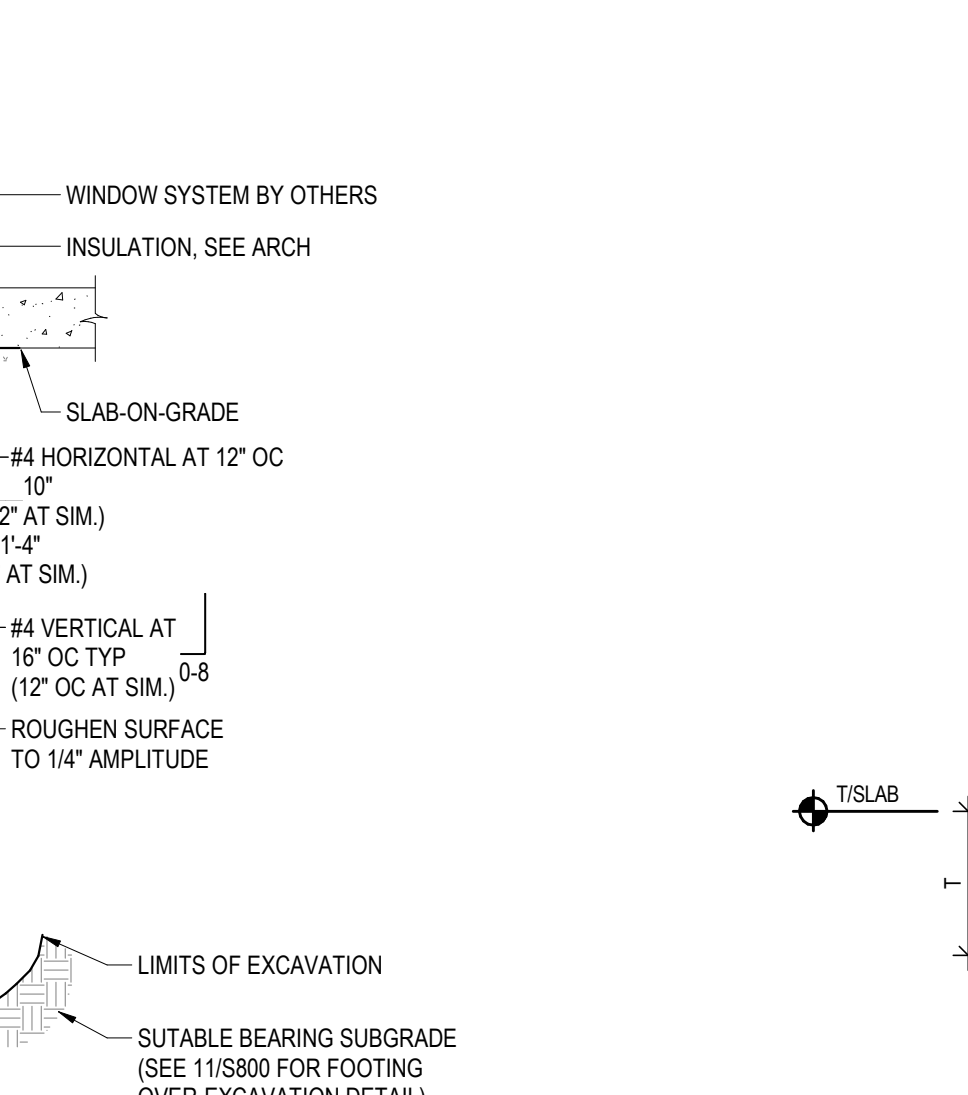
**13 TYP SLAB-ON-GRADE CONSTRUCTION & CONTROL JOINT**  
SCALE: 1" = 1'-0"



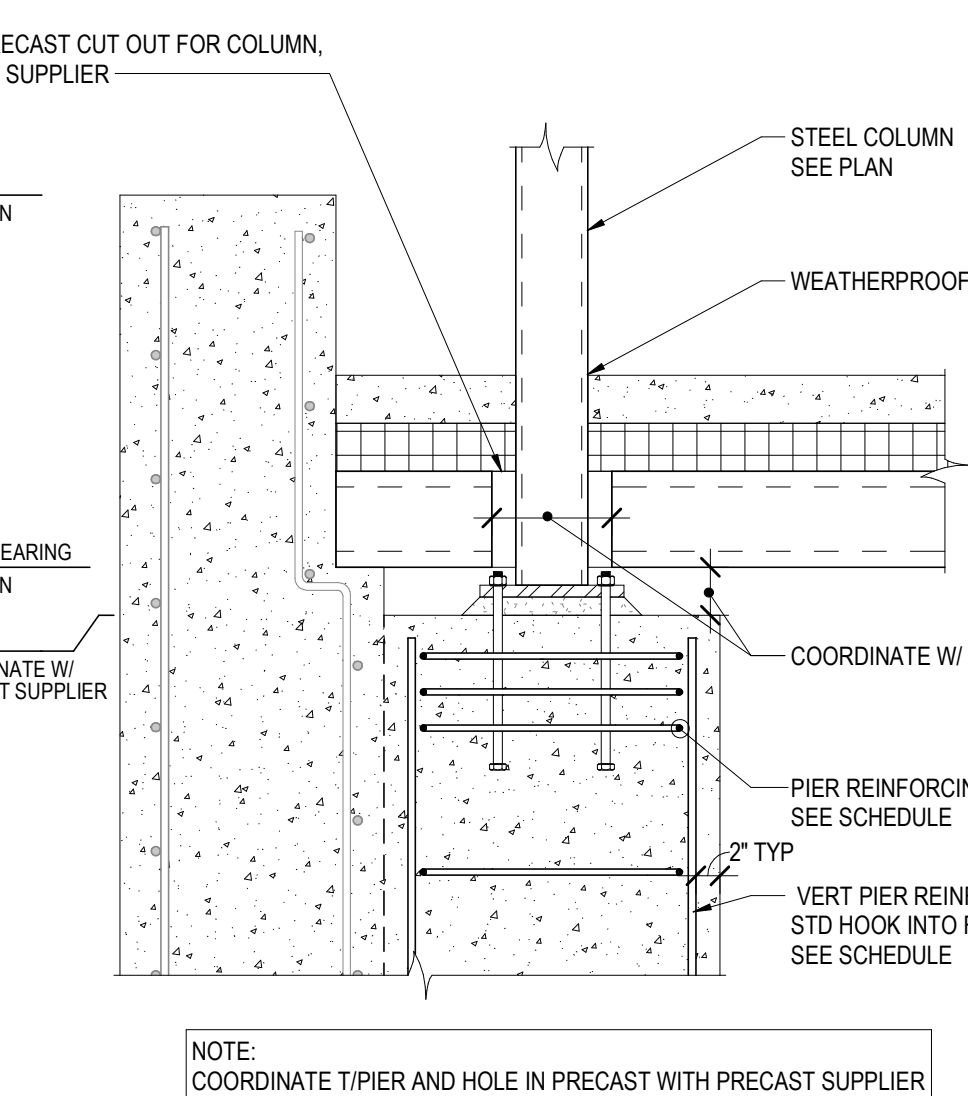
**14 CONCRETE FROST DETAIL AT CMU**  
SCALE: 3/4" = 1'-0"



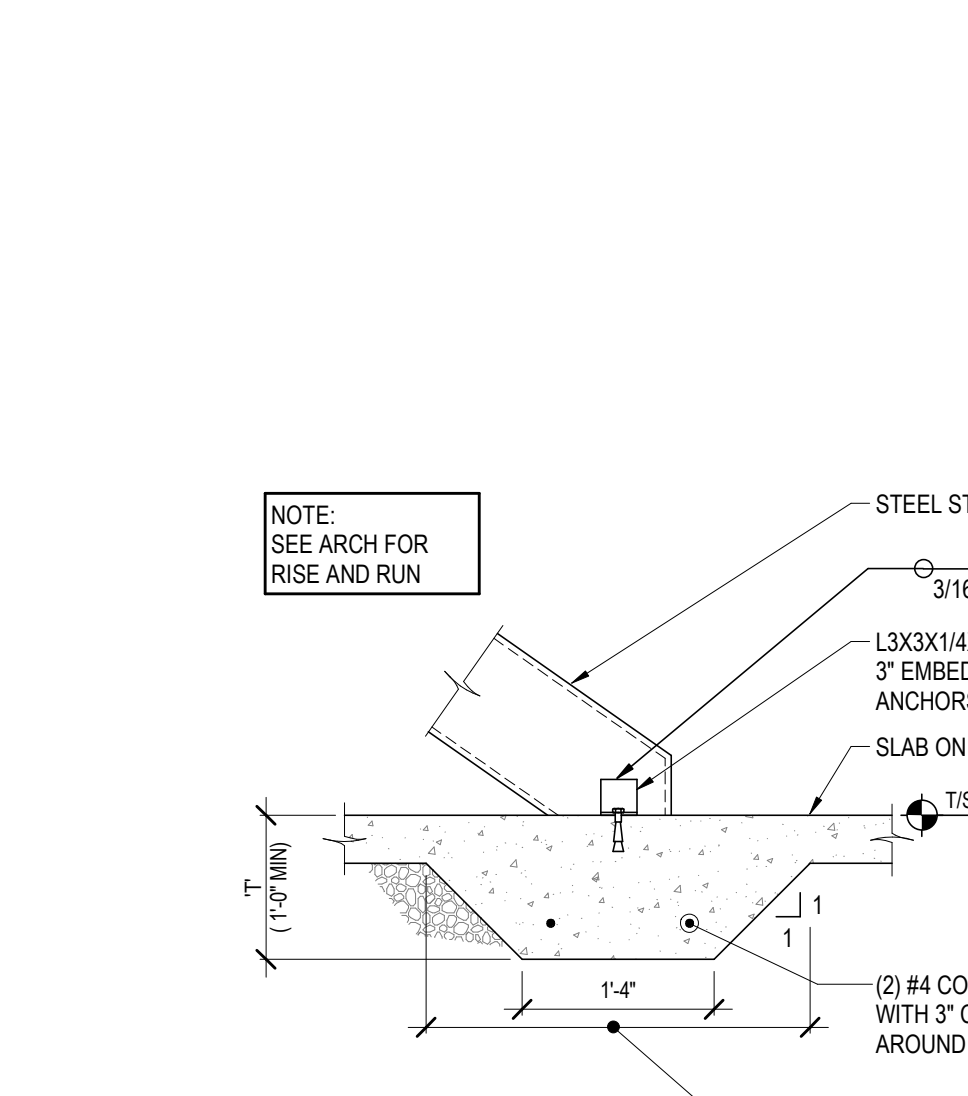
**15 CONCRETE FROST AT WINDOW SYSTEM**  
SCALE: 3/4" = 1'-0"



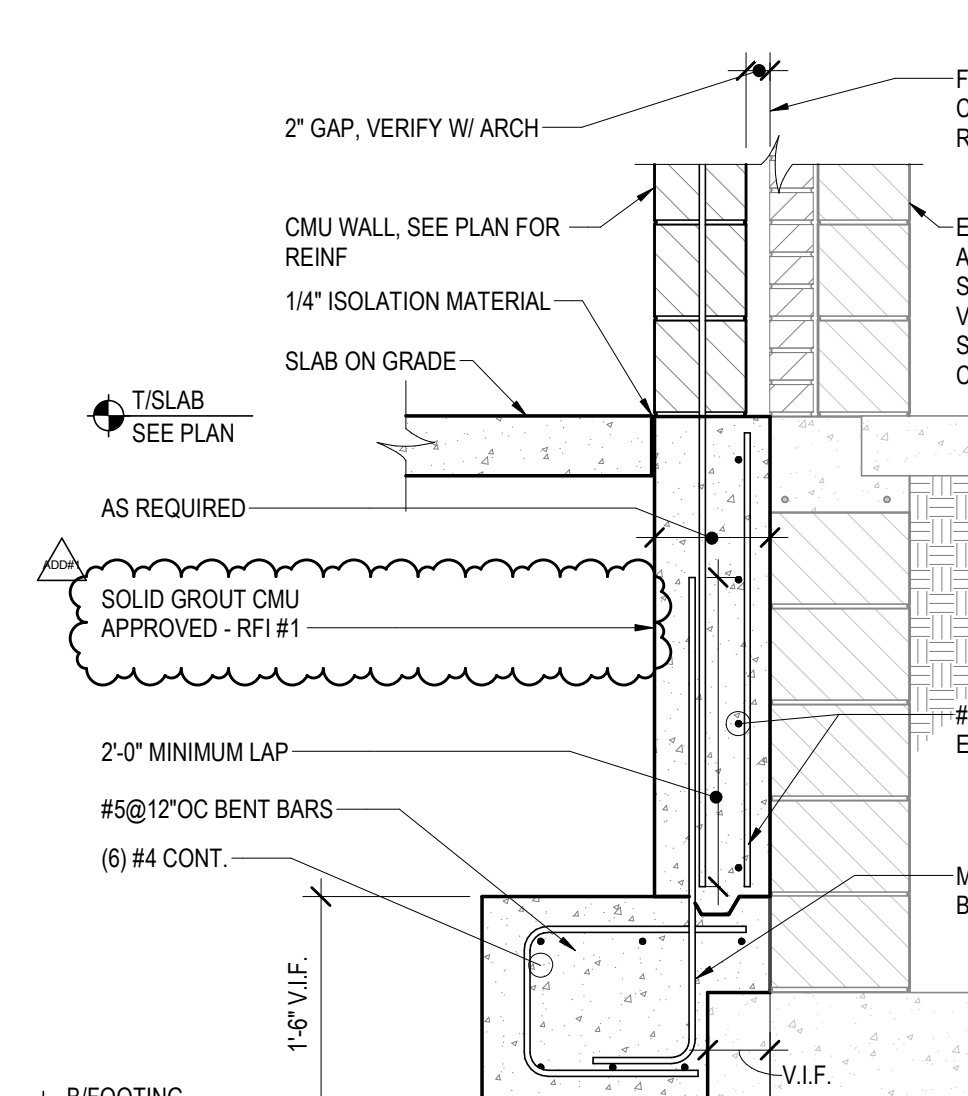
**16 SLAB-ON-GRADE DEPRESSION**  
SCALE: 1" = 1'-0"



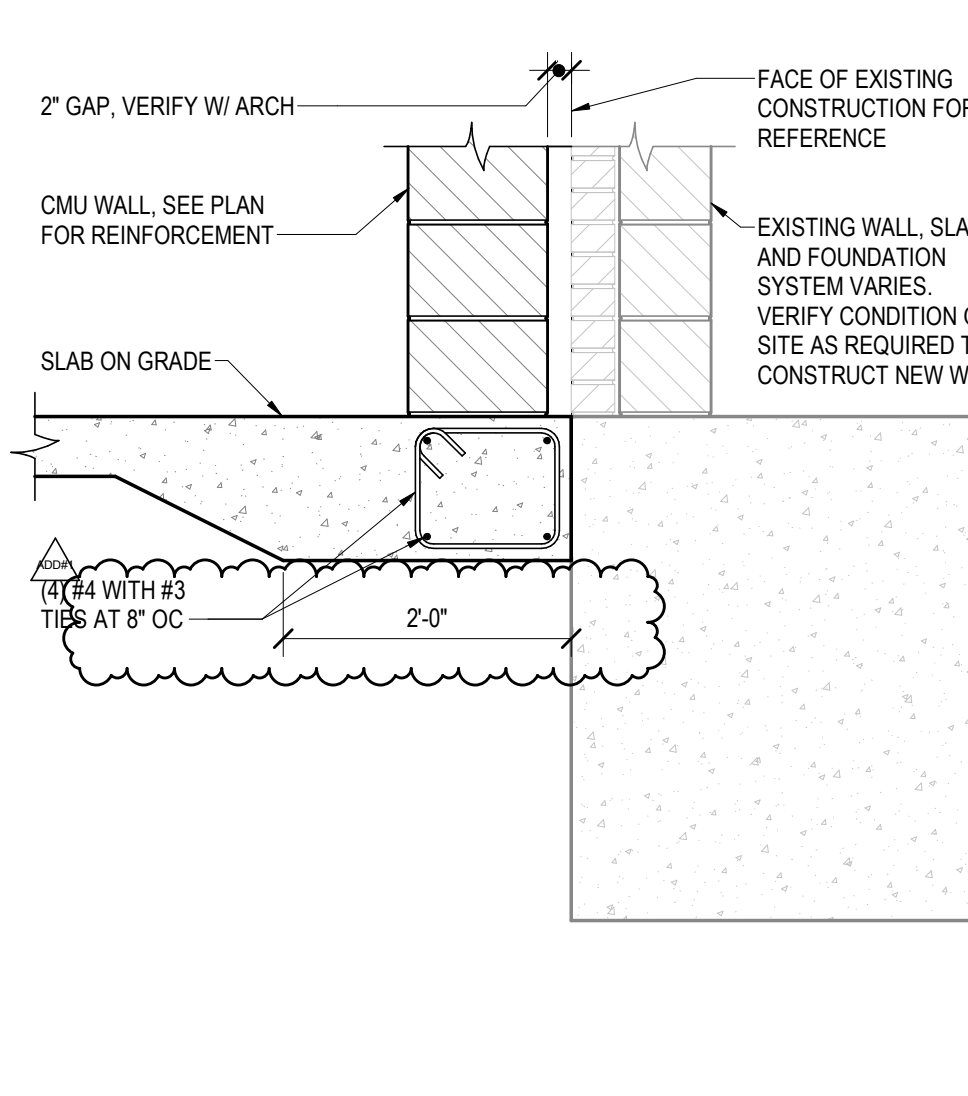
**17 COLUMN AT PRECAST**  
SCALE: 3/4" = 1'-0"



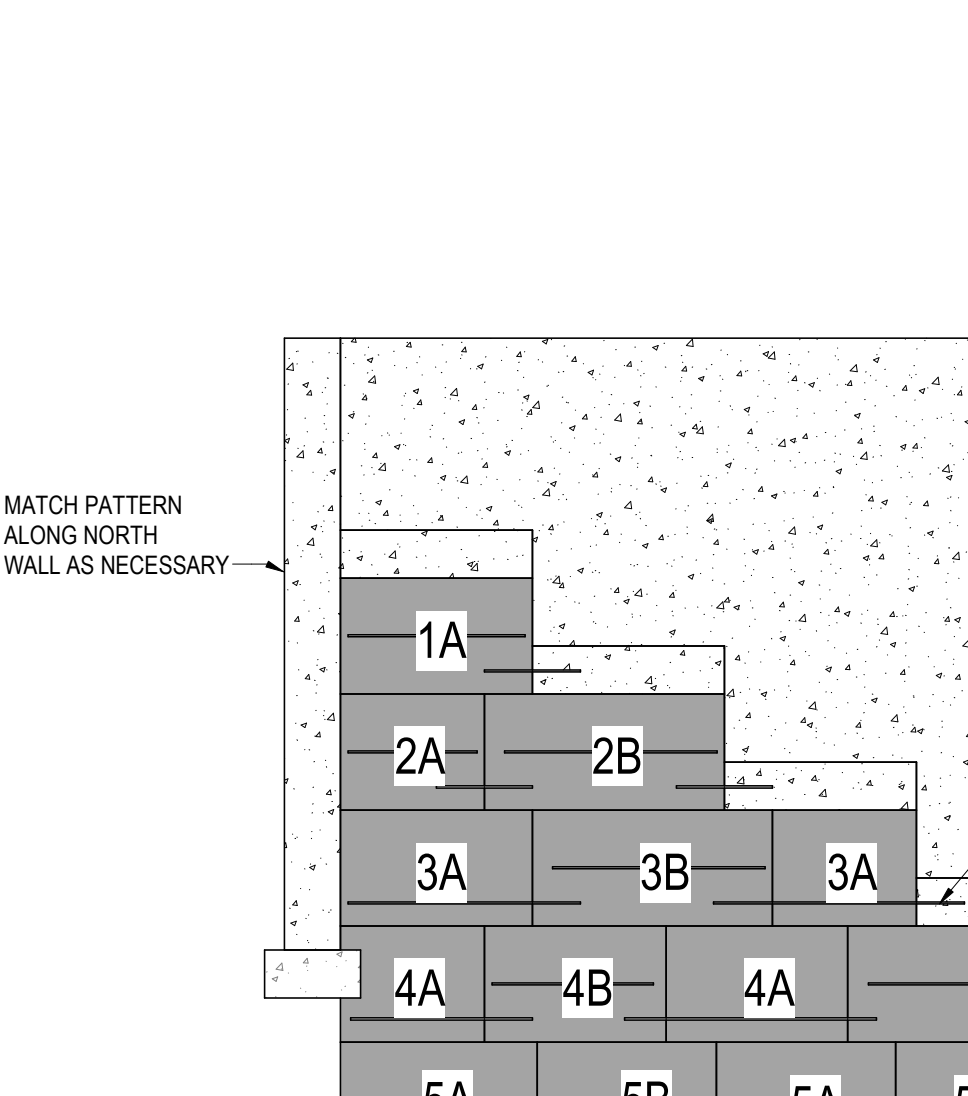
**18 TYPICAL THICKENED SLAB**  
SCALE: 3/4" = 1'-0"



**19A WALL SECTION @ EXISTING BLDG**  
SCALE: 3/4" = 1'-0"



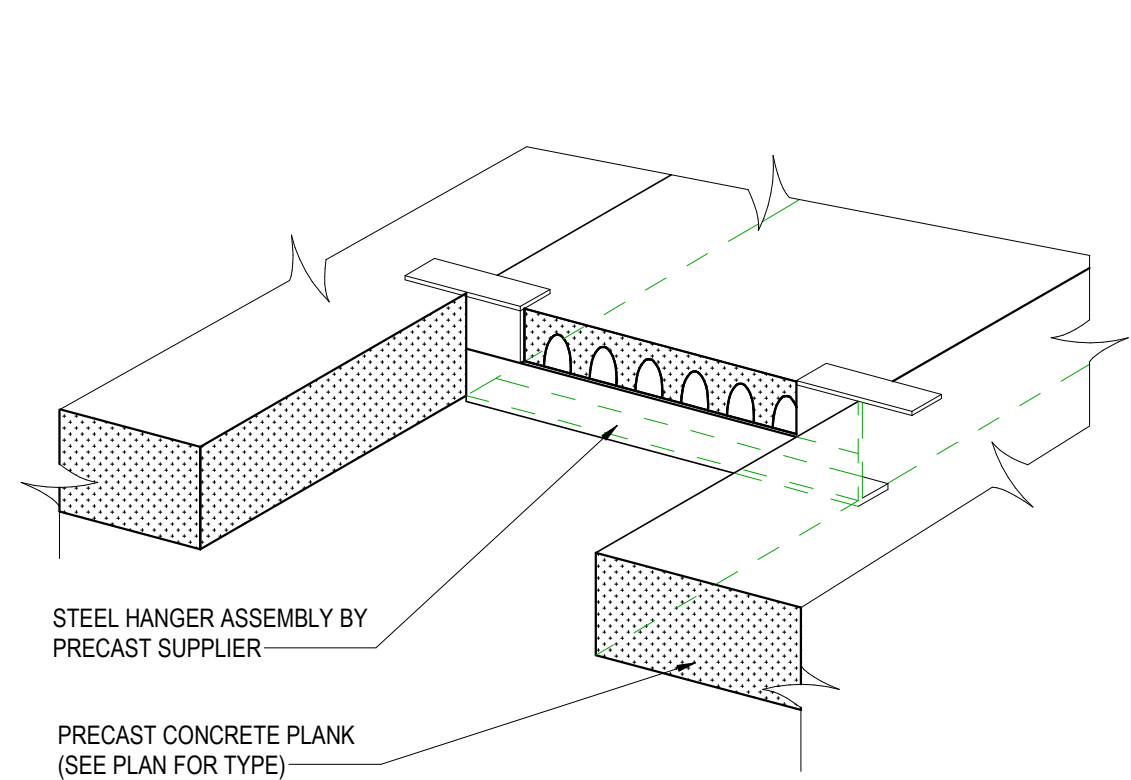
**19B WALL SECTION AT GRADE BEAM OPTION**  
SCALE: 3/4" = 1'-0"



**20 UNDERPIN SEQUENCE OPTION**  
SCALE: 1/4" = 1'-0"



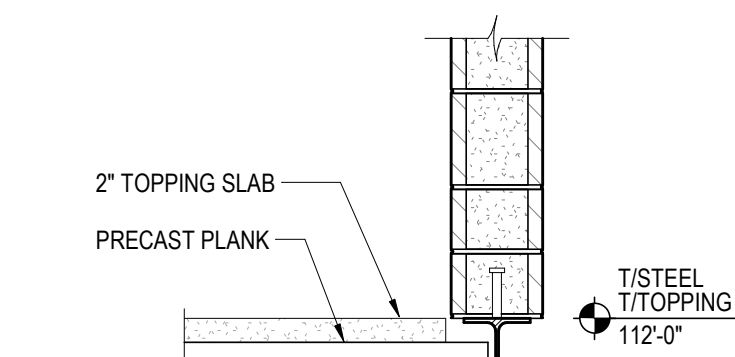
No.	Description	Date
ADD #1	Addendum #1	2/26/2020



LOADS TRANSFERRED (PLF)			
VERTICAL:	CASE:	A	B
DEAD (DOWN)		1330 PLF	--
LIVE (DOWN)		1200 PLF	--

**1 PRECAST PLANK HANGER**

SCALE: 1" = 1'-0"



**2 PRECAST WALL PLANK CONNECTION**

SCALE: 3/4" = 1'-0"

**3 PRECAST BEARING AT MASONRY WALL (WALL CONTIGUES)**

SCALE: 3/4" = 1'-0"

**4 PRECAST AT MASONRY WALL (WALL CONTIGUES)**

SCALE: 3/4" = 1'-0"

**5 PRECAST PLANK DETAIL AT NON-BEARING MASONRY WALL**

SCALE: 1" = 1'-0"

**6 PRECAST BEARING AT INTERIOR MASONRY WALL (WALL CONTIGUES)**

SCALE: 3/4" = 1'-0"

**7 NON-LOAD BEARING MASONRY WALL AT PRECAST PLANK**

SCALE: 3/4" = 1'-0"

**8 SECTION**

SCALE: 3/4" = 1'-0"

**9 DETAIL**

SCALE: 3/4" = 1'-0"

**10 SECTION**

SCALE: 3/4" = 1'-0"

LOADS TRANSFERRED (PLF)	
VERTICAL:	DEAD (DOWN): 0.4K
	LIVE (DOWN): 1.4K
	WIND (UP): 0.3K
	WIND PARALLEL TO WALL (PLF)(+/-): 300 *
	WIND PERPENDICULAR TO WALL (PLF)(+/-): 530 *

AT SIM - SECK ANGLE ONLY

**11 END WALL DETAIL AT PRECAST WALL PANEL**

SCALE: 3/4" = 1'-0"

**12 BEAM SUPPORT AT PC WALL PANEL**

SCALE: 3/4" = 1'-0"

**13 SECTION**

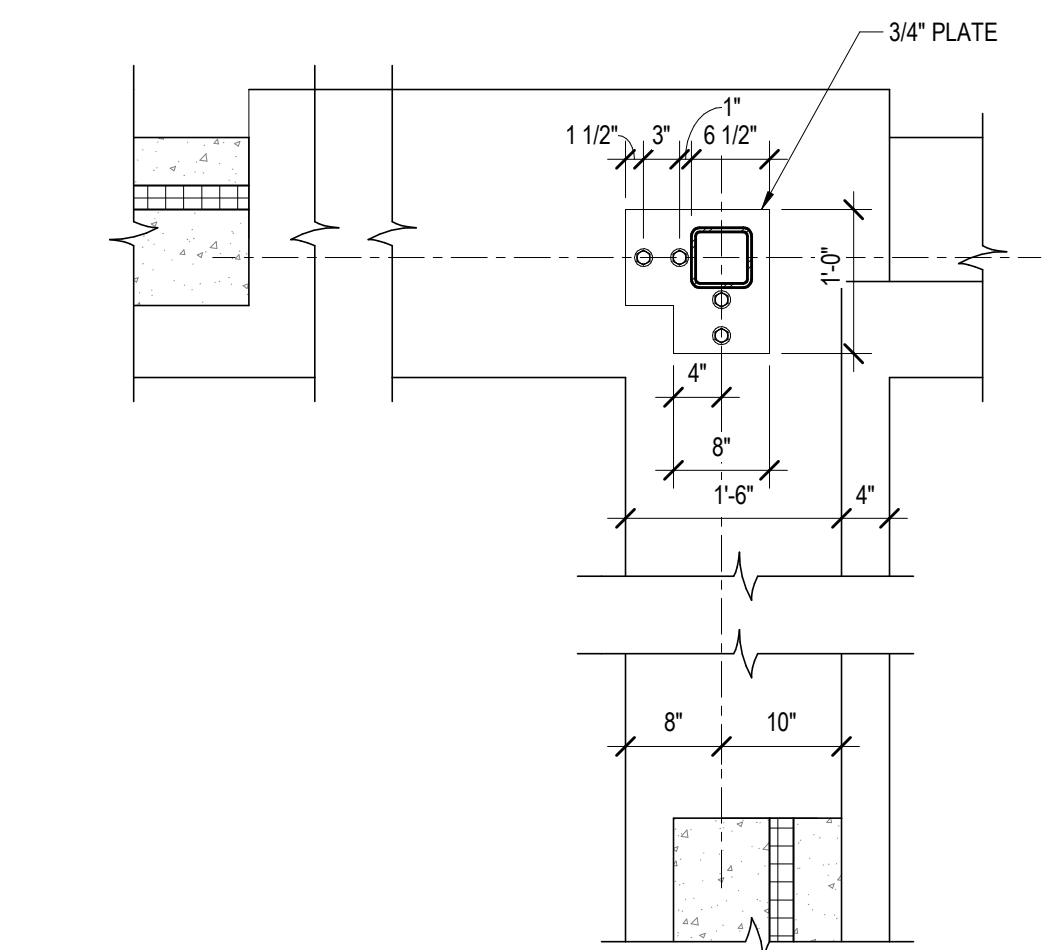
SCALE: 3/4" = 1'-0"

**14 SECTION AT RAILING**

SCALE: 3/4" = 1'-0"

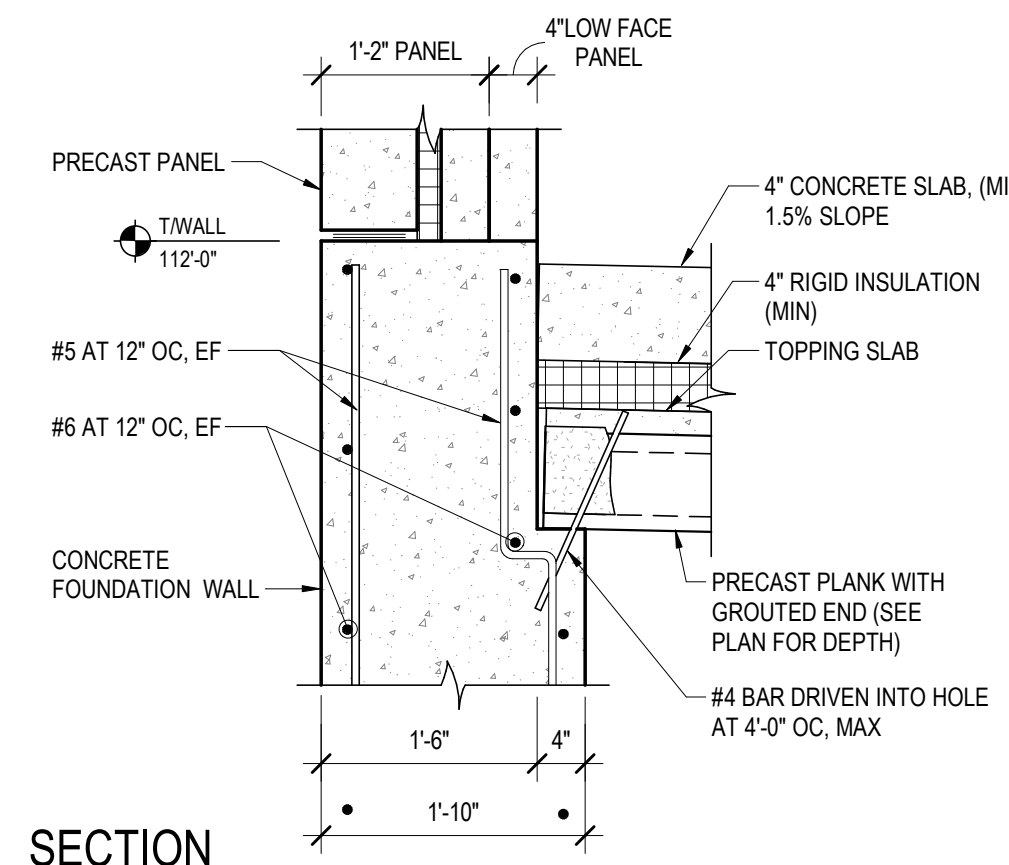
**15 SECTION AT RAILING**

SCALE: 3/4" = 1'-0"



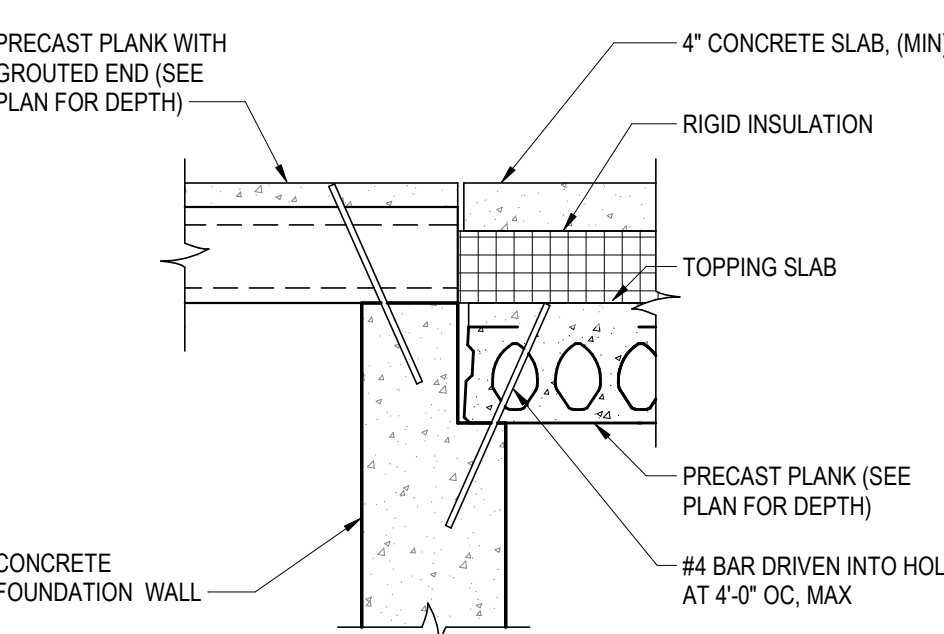
**16 PLAN DETAIL**

SCALE: 3/4" = 1'-0"



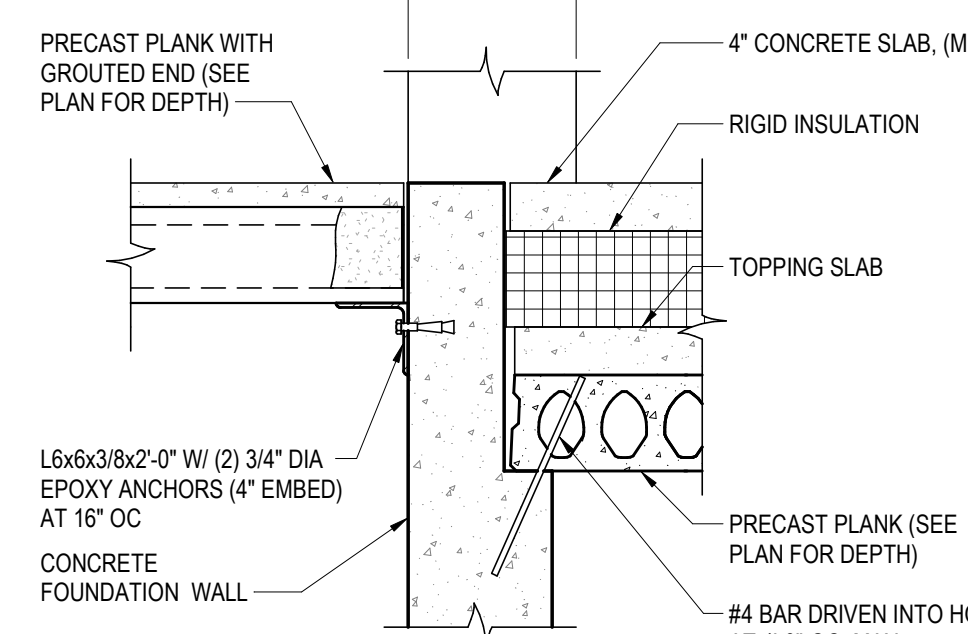
**17 SECTION**

SCALE: 3/4" = 1'-0"



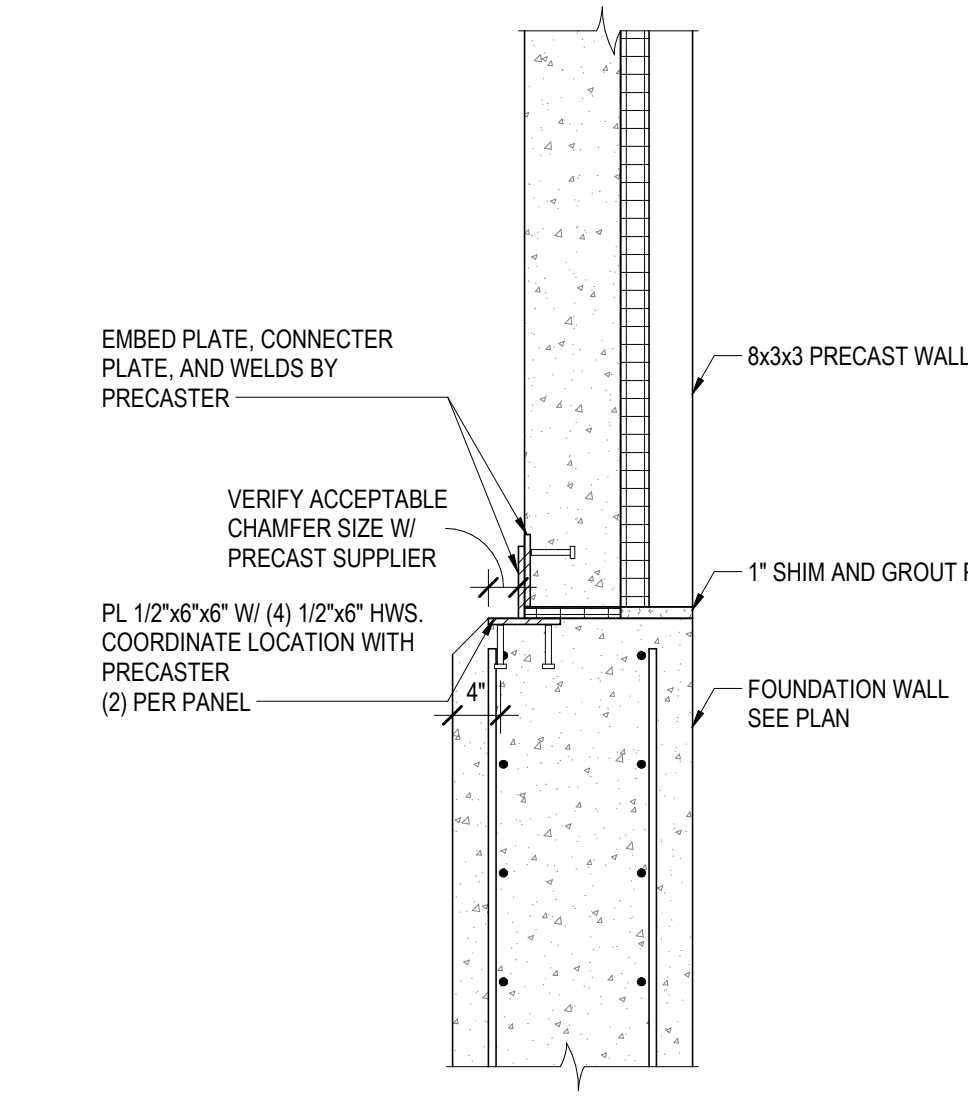
**18 SECTION**

SCALE: 3/4" = 1'-0"



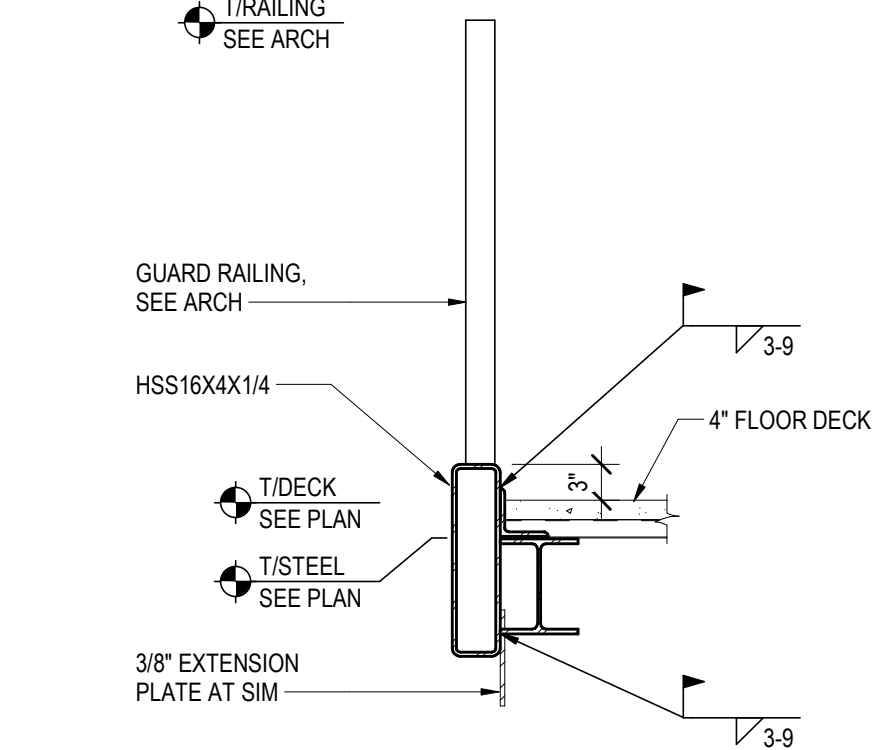
**19 SECTION**

SCALE: 3/4" = 1'-0"



**20 PANEL TO FOUNDATION CONNECTION**

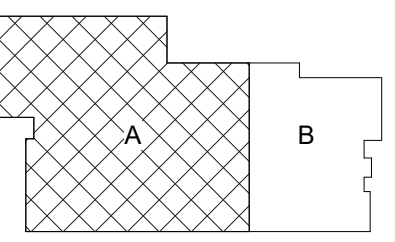
SCALE: 3/4" = 1'-0"



**21 SECTION AT RAILING**

SCALE: 3/4" = 1'-0"

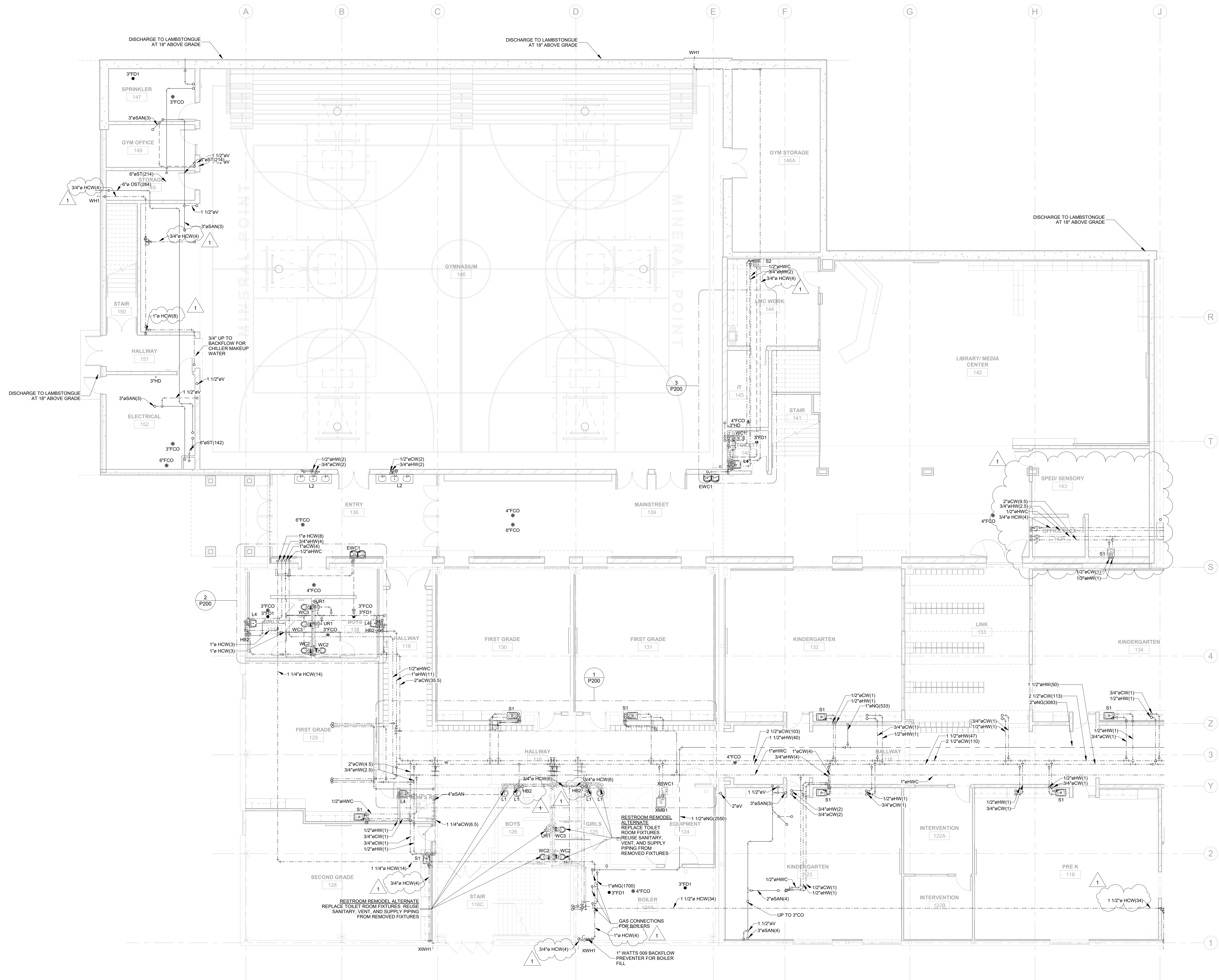


KEY PLAN 

Revisions:		
No.	Description	Date
	Addendum 1	02-26-20

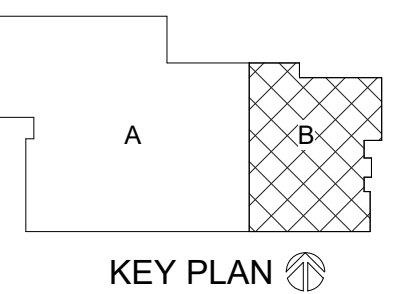
Graphic Scale:  
**VARIES**

Last Update:  
**2/26/2020 9:13:27 AM**





**LOWER LEVEL ABOVE GROUND SEGMENT A**  
 SCALE: 1/8" = 1'-0"



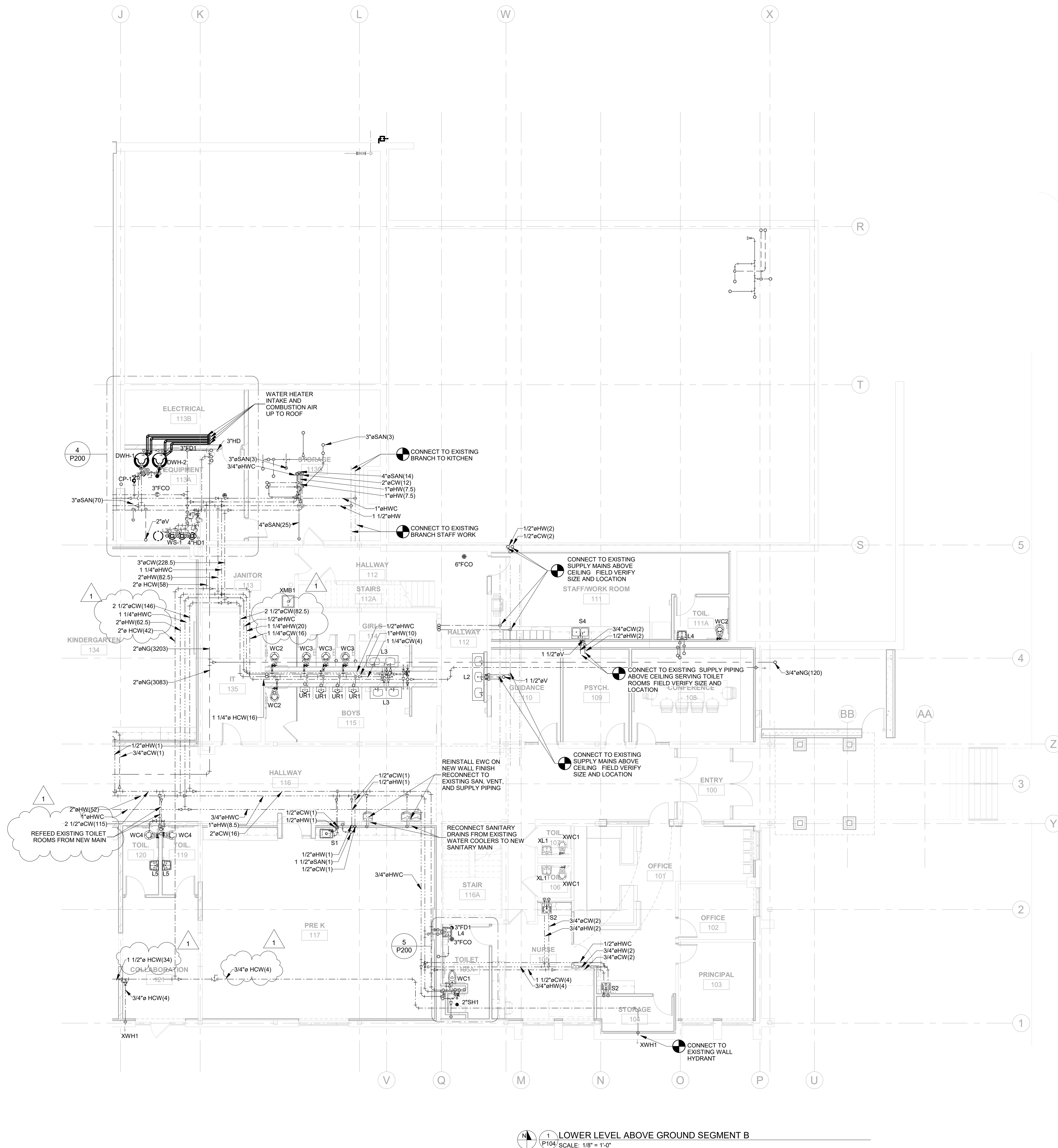
No.	Description	Date
	Addendum 1	02-26-20


Graphic Scale:

**VARIES**

Last Update:  
**2/26/2020 9:13:31 AM**

P104







HSR ASSOCIATES INC.  
100 MILWAUKEE STREET  
LA CROSSE, WISCONSIN  
PHONE: 608.784.1830  
FAX: 608.782.5844  
www.hsrassociates.com

Consultant:

Project Title: MINERAL POINT UNIFIED SCHOOL DISTRICT  
ELEMENTARY SCHOOL

Project Location: 611 COTHERN STREET  
MINERAL POINT, WISCONSIN

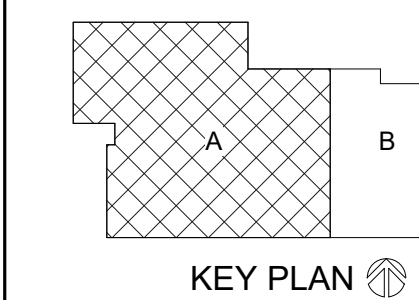
Sheet Title: UPPER LEVEL REMODEL PLAN - SEG A

HSR Project Number: HSR #19001

Project Date: 2.13.2020

Drawn By: ZW

Key Plan:



BID  
DOCUMENTS

Revisions:		
No.	Description	Date
1	Addendum 1	02-26-20

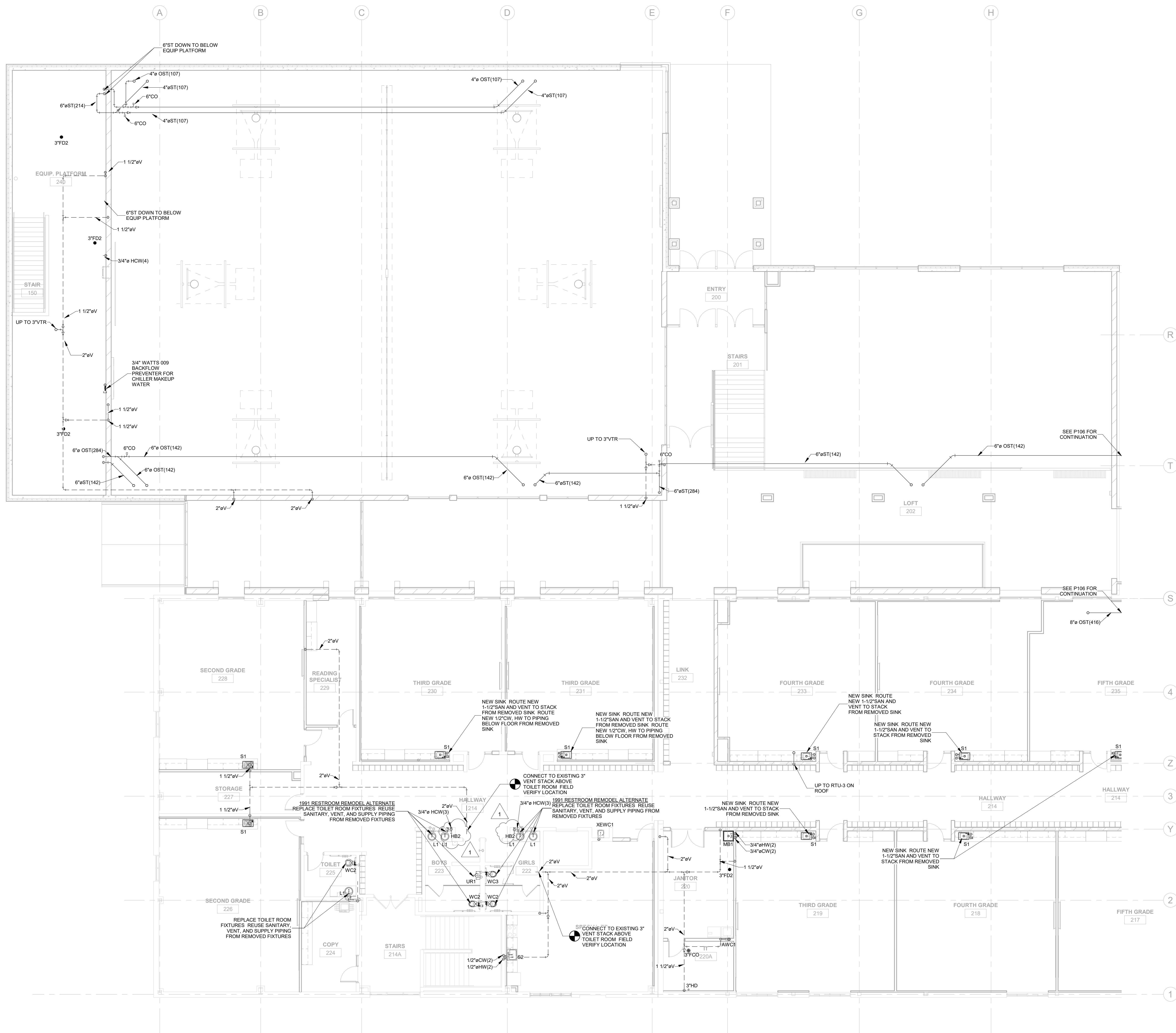
Graphic Scale: VARIES

Last Update: 2/26/2020 9:13:33 AM



1343 S 27TH STREET  
CALEDONIA, WI 53108  
P: 262.824.2675  
F: 262.835.9750

P105



UPPER LEVEL SEGMENT A  
SCALE: 1/8" = 1'-0"



**HSR ASSOCIATES INC.**  
100 MILWAUKEE STREET  
LA CROSSE, WISCONSIN  
PHONE: 608.784.1830  
FAX: 608.782.5844  
www.hsrassociates.com

Consultant:

Project Title: **MINERAL POINT UNIFIED SCHOOL DISTRICT  
ELEMENTARY SCHOOL**

Project Location: **611 COTHERN STREET  
MINERAL POINT, WISCONSIN**

Sheet Title: **PLUMBING DETAIL PLANS**

HSR Project Number:  
**HSR #19001**

Project Date:  
**2.13.2020**

Drawn By:  
**ZW**

Key Plan:

**BID  
DOCUMENTS**

No.	Description	Date
1	Addendum 1	02-26-20

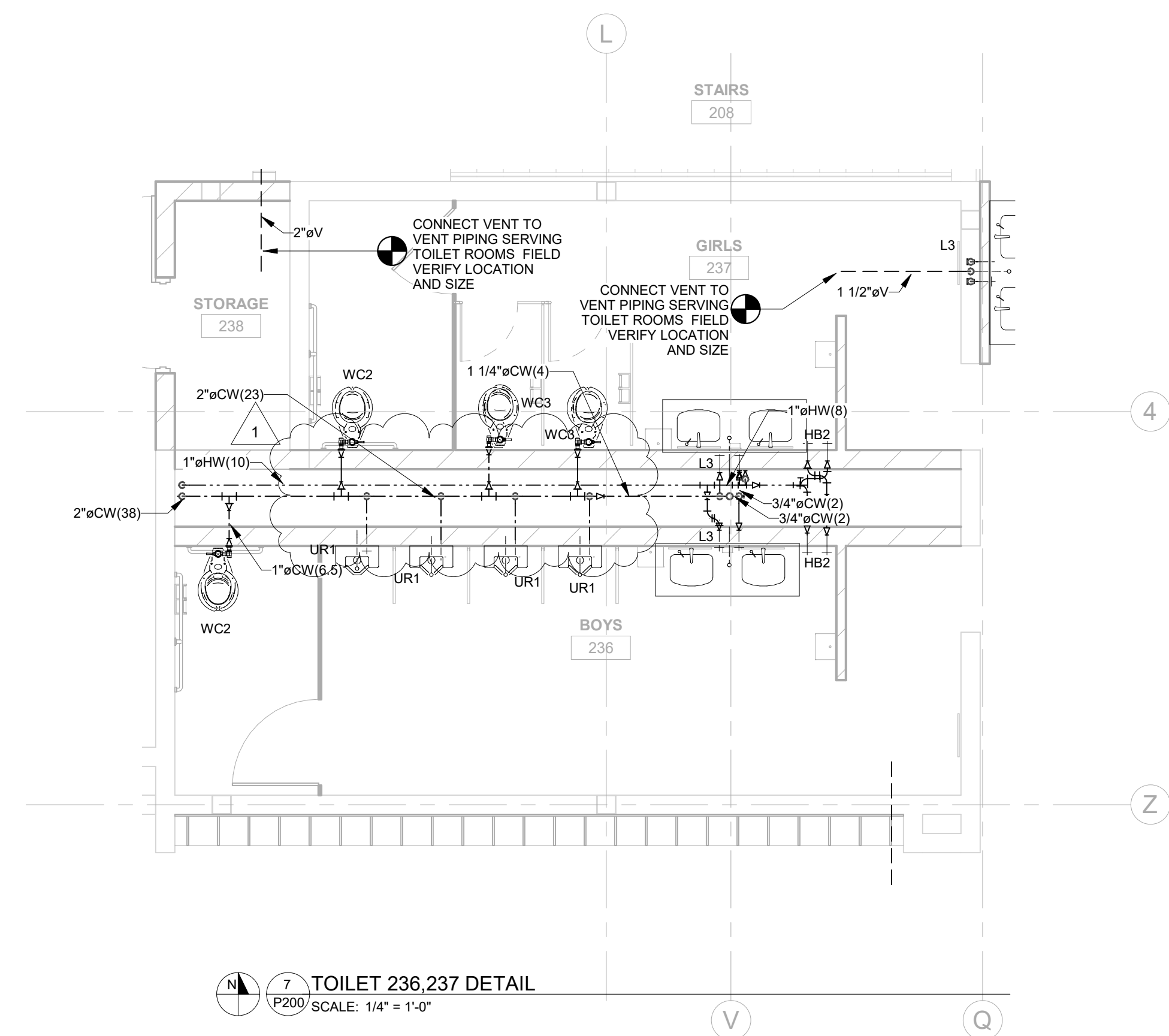
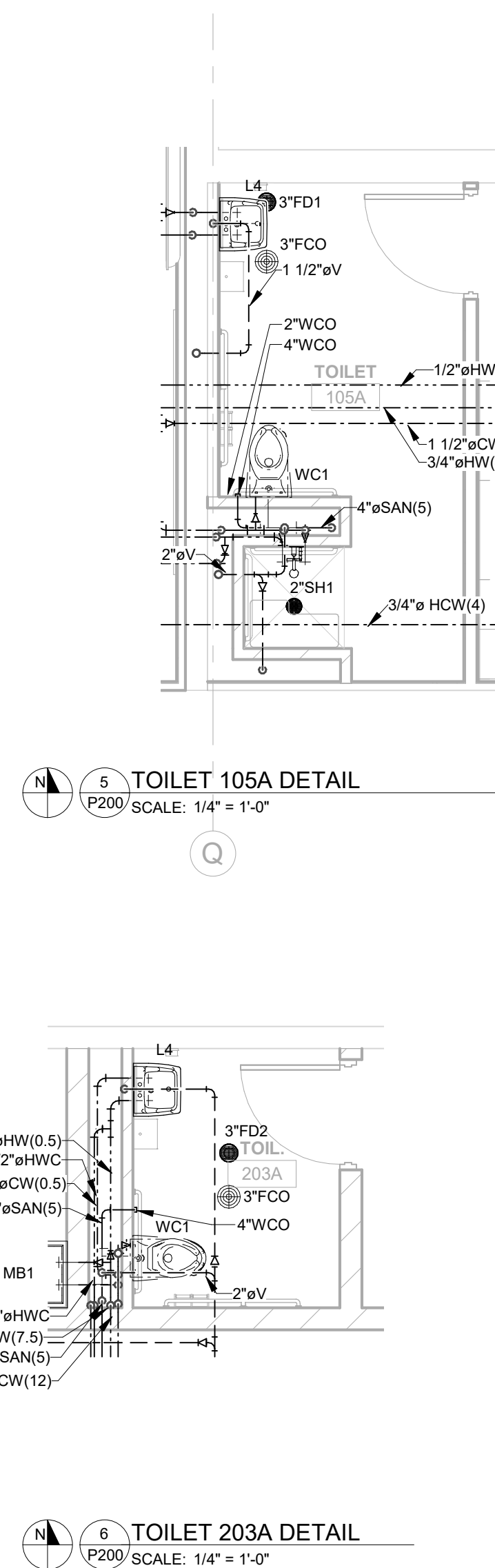
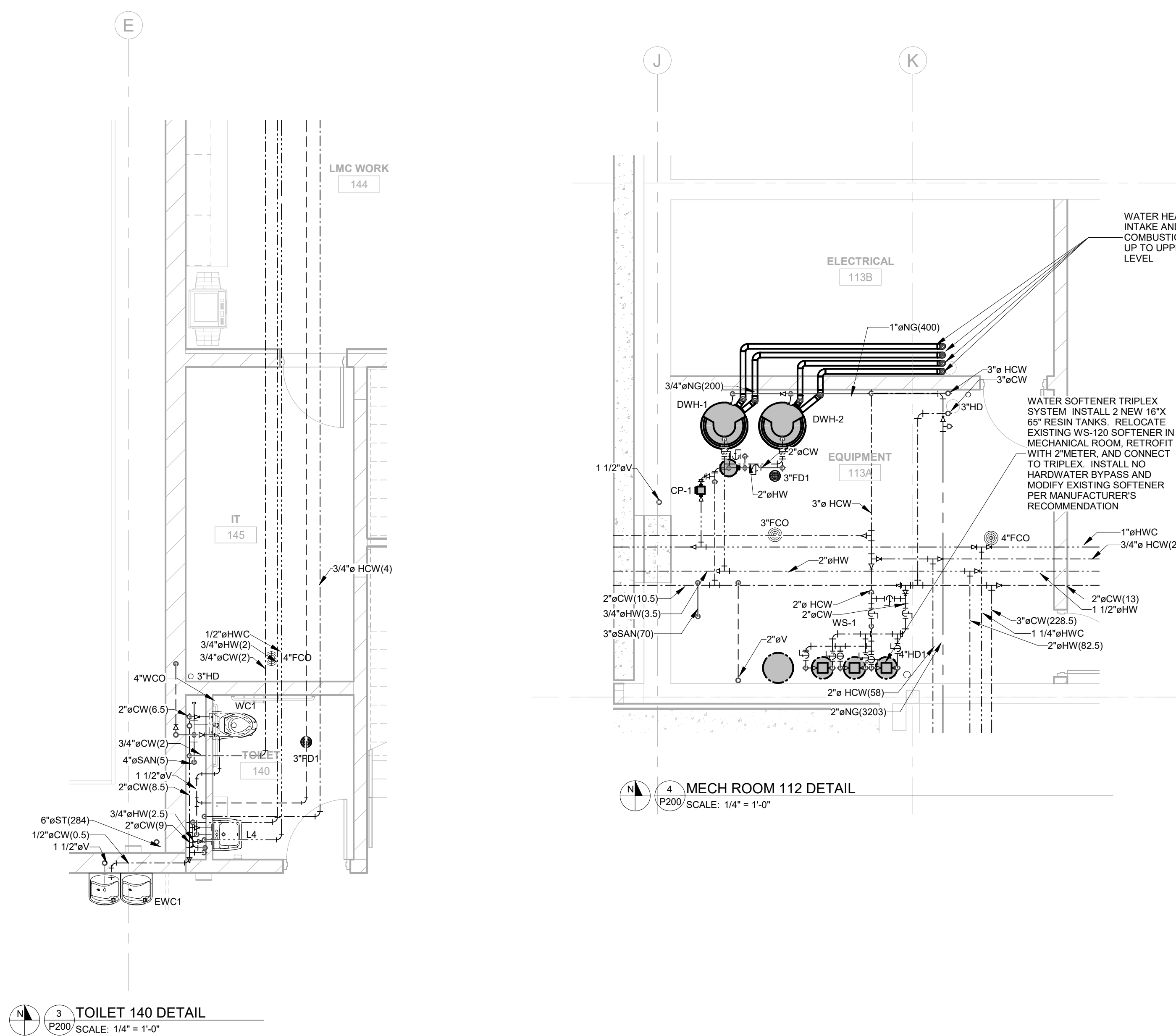
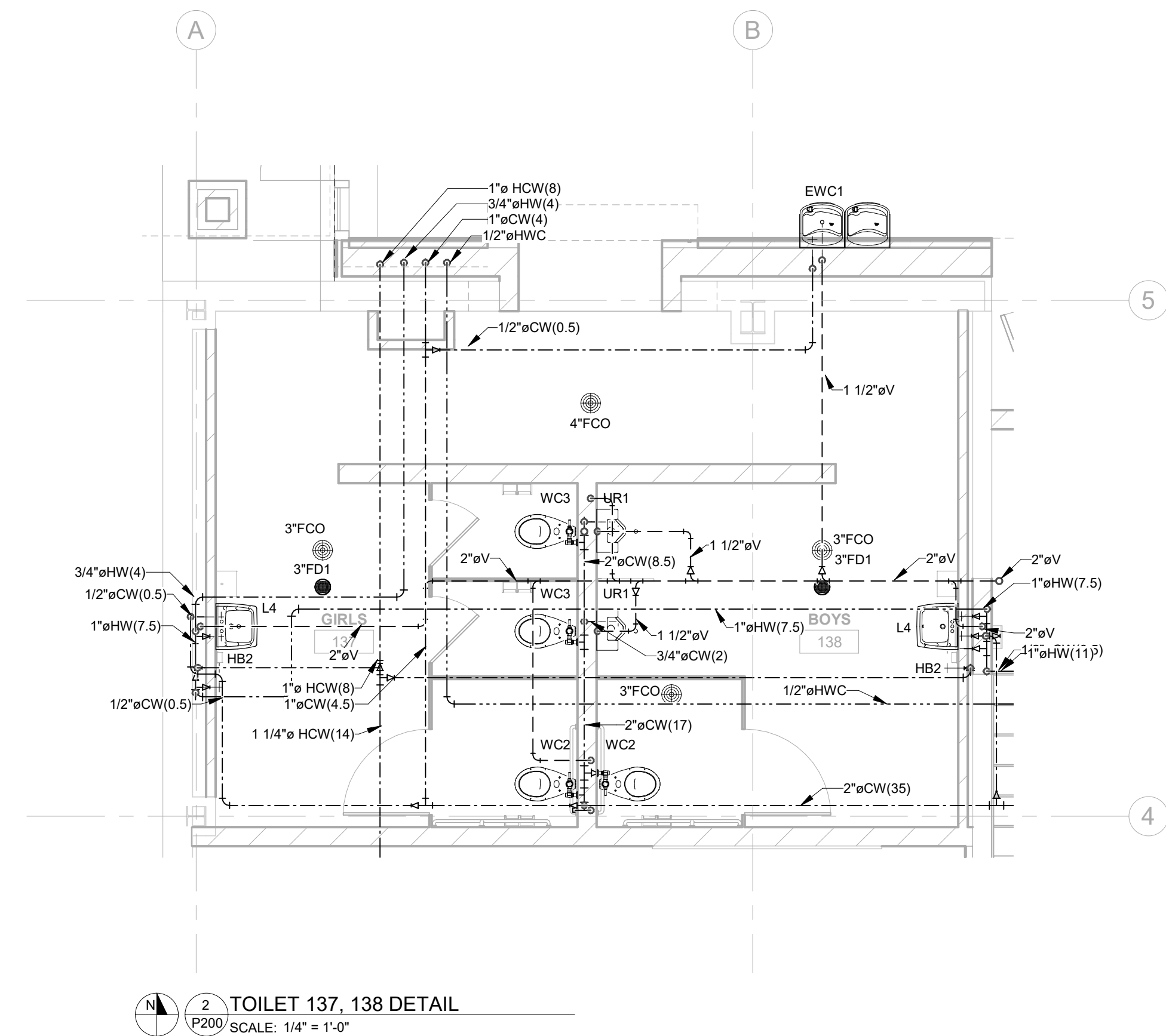
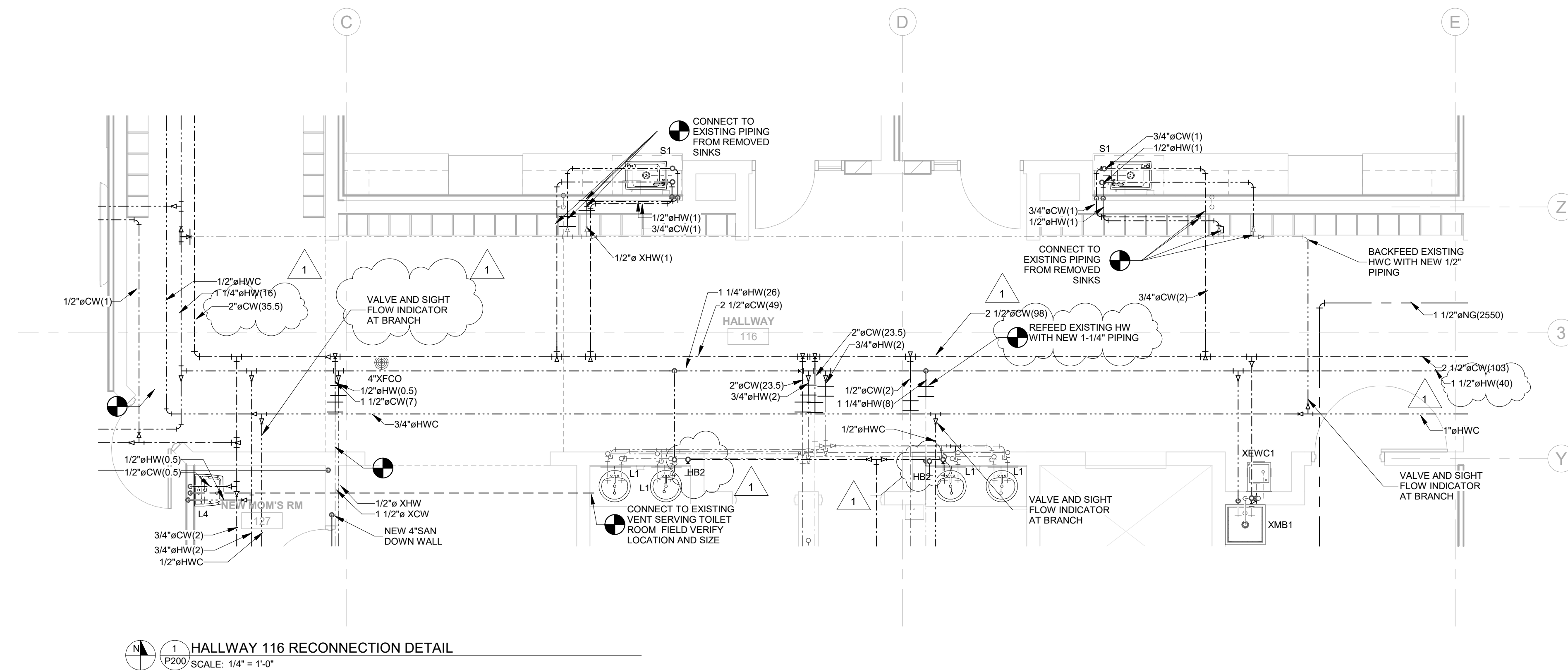
Graphic Scale:  
**VARIES**

Last Update:  
**2/26/2020 9:13:35 AM**

**SOUTHPORT**  
Engineered Systems

1343 S 27TH STREET  
CALEDONIA, WI 53108  
P: 262.824.2675  
F: 262.835.9750

**P200**



3 TOILET 140 DETAIL  
P200 SCALE: 1/4" = 1'-0"

4 MECH ROOM 112 DETAIL  
P200 SCALE: 1/4" = 1'-0"

6 TOILET 203A DETAIL  
P200 SCALE: 1/4" = 1'-0"

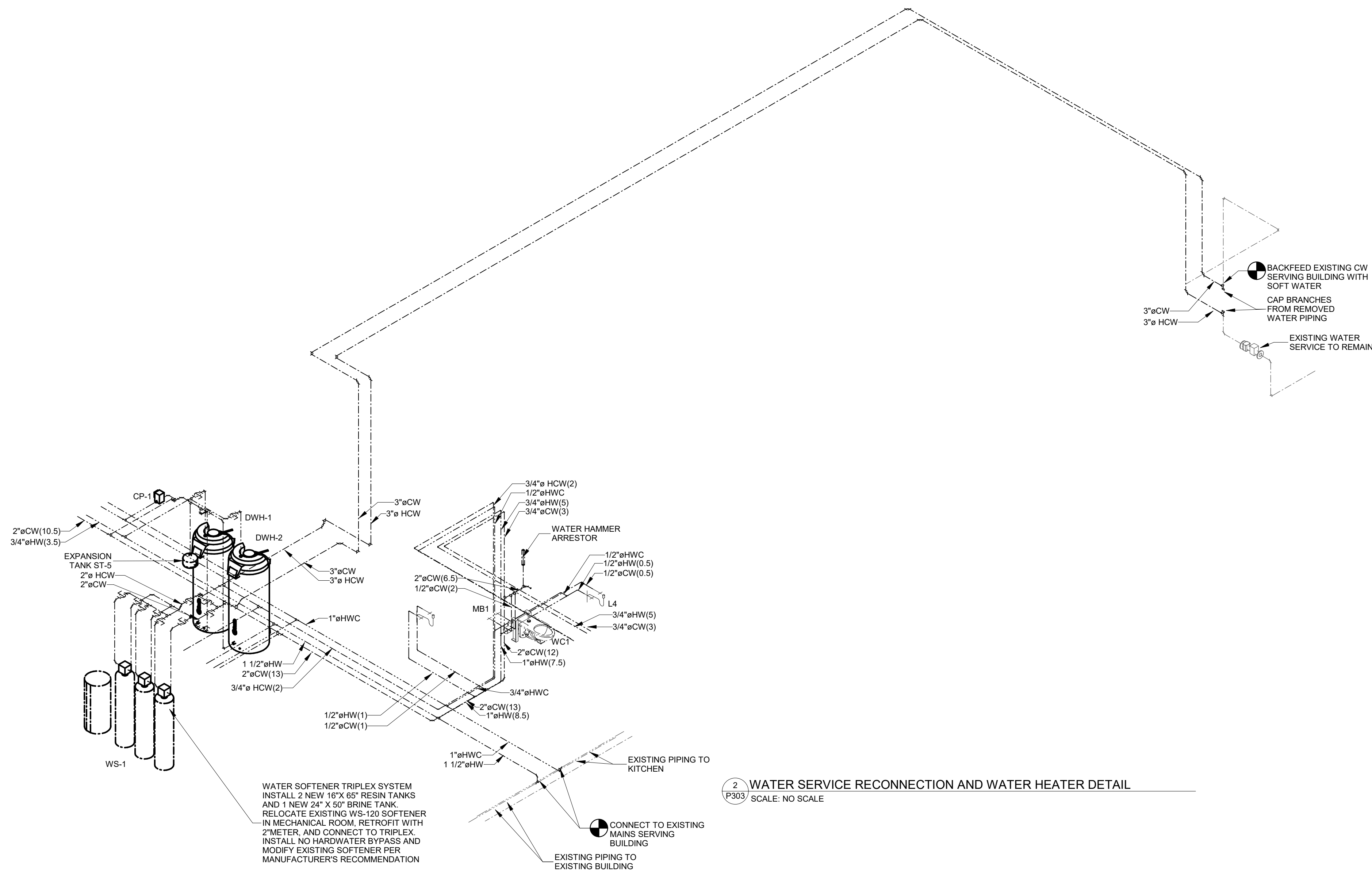
7 TOILET 236, 237 DETAIL  
P200 SCALE: 1/4" = 1'-0"

5 TOILET 105A DETAIL  
P200 SCALE: 1/4" = 1'-0"

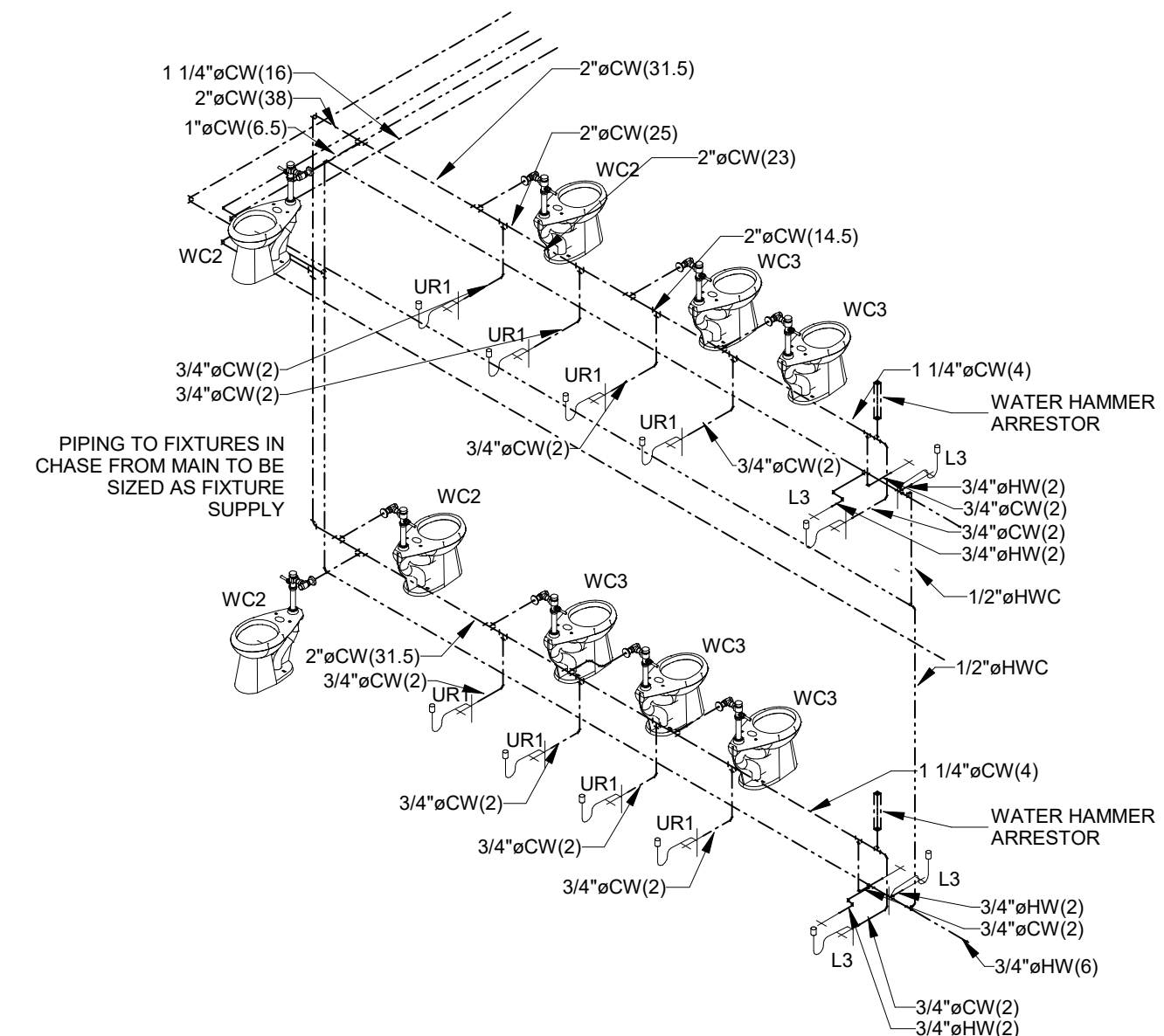
2 TOILET 137, 138 DETAIL  
P200 SCALE: 1/4" = 1'-0"

1 HALLWAY 116 RECONNECTION DETAIL  
P200 SCALE: 1/4" = 1'-0"

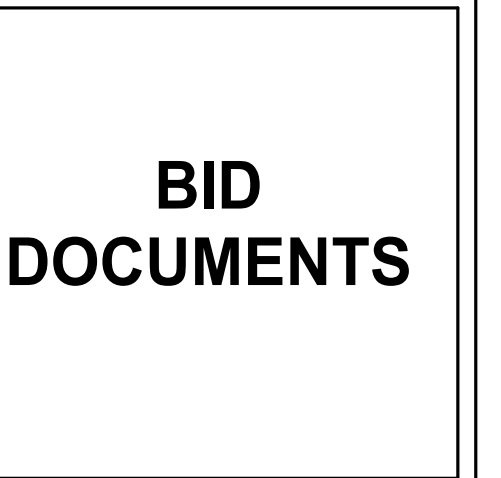




2 WATER SERVICE RECONNECTION AND WATER HEATER DETAIL  
P303 SCALE: NO SCALE



1 TOILET ROOMS 114, 115, 236, 237 DETAIL ISOMETRIC  
P303 SCALE: NO SCALE



Revisions:		
No.	Description	Date
Addendum 1		02-26-20

Graphic Scale:  
VARIES

Last Update:  
2/26/2020 9:13:35 AM

